

**Wisconsin Tribal Conservation Advisory Council Meeting Minutes**  
**Wednesday, May 2 and Thursday, May 3, 2012**  
**Ho-Chunk**

Meeting called to order at 8:59 am by Pat Pelky.

**1. Roll Call**

Present: Bad River (Lacey Hill), FCPC (Nate Guldán, Frank Shepard), Ho-Chunk (Randy Poelma, Sara Hatleli), LCO (Brett McConnell), Mole Lake (Tina Van Zile), Oneida (Pat Pelky), Stockbridge-Munsee (Luke Hennigan). Quorum present.

Others Present: Nancleana Machado (Louisiana), Chris Borden (NRCS), Greg Yakle (NRCS), Tom Melnarik (NRCS), John White (NRCS), Pat Leavenworth (NRCS), Donna Huebner (Rural Development), Keith Sengbusch (WTCAC), Jim Ruppel (EPA), Susan Hunter (FSA), Crystlyn Rodrigue (Grand Caillou/Dulac), Kristina Peterson (Bayou Blue PCUSA), JoAnn Cruse (APHIS), Michael Stinebrink (NRCS), Jerry Thompson (WTCAC), Theresa Dardar (Pointe-au-Chien Indian Tribe), Kelly Bagwell (Isle de Jean Charles Indian Tribe), Maxie Machado (Grand Bayou), Sherrie Zenk-Reed (NRCS), Tony Bush (NRCS), Samantha Lawien (NRCS), Randy Gilbertson (WTCAC)

**2. Approval of Agenda**

Add NRCS report on Technical Recommendations to agenda

**MOTION:** Motion to approve agenda with addition. Motion by Mole Lake, seconded by LCO. All ayes, zero opposed, motion carried.

**3. Approval of Minutes**

Change her to his in Item 13 in reference to the Nevada State Conservationist.

**MOTION:** Motion to approve April 4, 2012 minutes with modification. Motion by Mole Lake, seconded by Ho-Chunk. All ayes, zero opposed, motion carried.

**4. NRCS Update**

Pat Leavenworth – Senate committee on Agriculture, Nutrition, and Forestry met on April 26 and passed Agriculture Reform, Food and Jobs Act of 2012. It passed by a vote of 16 – 4 which is a good sign as people seem to be happy with what is in it in terms of Farm Bill programs. There are cuts but conservation is treated quite well. Still has to go to Senate Floor and then the House has to come up with their version and then work together for the final bill. Under this bill, WHIP roles into EQIP and there is a certain percent of EQIP dollars that each state has to set aside for WHIP objectives. The Farm and Ranchlands Protection Program, Wetland Reserve

Program, and Grassland Reserve Program are combined into an Agriculture Conservation Easement Program. CRP acres are reduced to 25 million acres from 32 million acres by 2017. House subcommittee held a hearing on the same on the formulation of 2012 Farm Bill conservation programs. Witnesses came forth and all witnesses generally supported the Senate Bill. They agreed with consolidation of EQIP and WHIP and the Conservation Partnership. Because of the fact that the Senate has a good version out there, hopefully the House will agree and we will have a Farm Bill.

Pat Pelky – Thanked Pat Leavenworth for getting him a meeting with Secretary Vilsack. He raised his hand but was never called on, Pat Leavenworth got Pat Pelky a couple of minute sit down with Secretary Vilsack. He gave him one of our brochures and told him what we were trying to do up here.

In terms of budget for 2013, the Senate Committee on Appropriations on which Senator Kohl is a major player passed an Agriculture, Rural Development, Food and Drug Administration, and Related Agencies and Energy and Water Development Appropriations bill by a 28 – 1 vote. It totals \$28.75 billion and this year there was \$19.65 billion, so they actually increased it a bit.

Paul Strong who is the supervisor of Chequamegon-Nicolet National Forest got in touch with her about 4 months ago wanting to talk about the possibility of a partnership at the Great Lakes Visitor Center. They are conducting research on American hazelnuts in that part of the world. \$846,000 was awarded from USDA to a series of researchers and they are trying to find out if that part of the world is favorable to the growth of American hazelnuts and find if there is good disease resistance in the hazelnuts there. They hope to improve the genetics of these trees. Coordinated with the grant the center has on the development of a Native American foods cook book. They realized this would be a good opportunity to partner with the Tribes. They will keep us updated as they have not approached the Tribes yet.

They may have to broaden the definition of EQIP as it has to be done on Agricultural land as WHIP did not have to be. This could be a road block for Tribes. Now would be the time to get a hold of Janie Hipp and let her know we want to be involved. Pat has a copy of the current Farm Bill for us (Jerry will scan and email out). Pat read the Bill and she feels the applicability of the WHIP practices is very broad and we should be ok.

Secretary Vilsack said we need to get on the National Advisory Councils that are being set up for the Tribes. We need to get information on the National Advisory Councils.

National Water Quality Initiative – John White – National initiative and states had to set aside 5% of EQIP and target up to three watersheds in the state that are on the 303d list or other threatened or critical watersheds in the state. They got nominations on the streams and they

worked with the WSTC and DNR and they targeted watersheds that are close to coming off the 303d list so they could show accomplishments. They are in Pierce, Green, and Green Lake Counties. It is expected that they will stay with the watersheds in these counties. The Tribes should give them a list of waters on Tribal lands that we feel should be on 303d list. These could be waters in the ceded territories as well because of hunting and gathering rights issues.

Three state tribal docket – This year all practices will be in the 3 state tribal docket - WI, MN, and MI and they have set up teams for those 3 states. They have broken the practices into related groups. Each state has team members that are on those grouping of practices. They just had a teleconference with the other states last week and Wisconsin is a little ahead on the planning process, they really emphasized that the needs of the Tribes need to be considered. They had a suggestion that a tribal liaison from WTCAC work directly with the teams as they work on these. They felt this was a good idea. They are finalizing who will be on the teams and who the Tribal point of contact will be in each state. He is open to suggestions on how we get the needs of the Tribe brought forward. The teams are just NRCS staff. WTCAC would like to see the regional scenarios and practices to have input before they are finalized. NRCS needs to let us know when we need to see them. How are Tribal practices in the current docket going to be incorporated into the regional one for the practices that only Tribes are eligible for? The Tribal docket was a big accomplishment for us so we want to make sure we don't lose it. Dan from IAC indicated that he would be more concerned for Minnesota and Michigan as they do not have this kind of group to have input. They are talking about doing one of these outreach meetings in conjunction with Minnesota and Michigan Tribes. The question was raised as to whether or not Minnesota and Michigan State Conservationists would be interested in having a regional (3 state) meeting with NRCS folks and the Tribes? We started out as a subcommittee to the WSTC so that may be appropriate for the MN and MI tribes.

EQIP Training Program Update – They are looking at the week of June 12 to get together with Jerry, Keith and Randy to start planning the training. Probably do the training in conjunction with the July or August meeting. Nate will attend the meeting as well. The meeting was scheduled for Wednesday June 13<sup>th</sup> probably at the Black River Falls Service Center at 9:30 am.

RTCAC- Pat Leavenworth thinks they are very close to announcing the members. She hasn't seen any scope of work drawn out for it yet. There are 3 slots for State Conservationists and she put her name in for one.

TSP - Followed up with State Forester and State Biologists to see if they are working with anyone to complete the training. They (Forestry) are working with 2 individuals on finalizing it. He does want to put together a webinar for anyone else that couldn't attend the sessions and may be interested. They have nominated Al Murray the FCPC Forester for the National Forest Committee. The State Biologist thinks there may be one person interested in certification. Can

everyone please follow up with everyone that attended training to see if they are going to pursue certification? College of Navajo Nation is very interested in the TSP training and bringing it to people there.

Harmony Training – Jerry said that this is something that Pat has wanted him to do for years. The last time it was held here in Wisconsin was a long time ago. They have funds to hold a session here in Wisconsin, prefer August 13 but September 17 would work to. FSA and RD would like to be involved. Jim indicated that EPA folks would benefit as well. 40 – 45 person limit on training. Jerry will try and get a draft agenda.

NRCS Technical recommendations follow up – we will table it to the next agenda.

NRCS Soil Data Products - Samantha Lawien – (See gave a handout, attached) – The entire state of Wisconsin has been mapped, but now they are in update mode, she doesn't know how substantial the relationship has been with soil survey and Tribes. If Tribes know of errors, please let them know. Call them if we want help on soils we are finding. Web Soil Survey is a great tool; you can get soils maps of anywhere. You can also get interpretative maps. Please call them if you don't know how to use it, they can come out and train ant Tribes that are interested. You can download the data in Arc Map, but you need the Soil Data Viewer extension in Arc Map to use the data. They would love to show us how it works. If there is anything specific the Tribes would like for soil data interpretation please let them know and they would love to help out. Soil Web, you can go to a place, hit a button on GPS and it will tell you what soil you are standing on (this is a smartphone app). They have equipment they can take out into the field and they can go and poke holes to figure out where water table is sitting so that we could have a better idea of what the restrictions would be. They would love to come and train the tribes on this! There are 4 staff in Onalaska, 2 in Rhinelander, and 4 in Dodge County.

Jerry got a response from Janie Hipp on input to the Farm Bill. USDA is not writing it but they do advise the Hill. Their plan is that once the bill is passed they will hold a series of walkthroughs on what is in the bill. This will immediately begin the dialogue and consultation process. As they have been asked for technical assistance they have shared what they have heard. She would be glad to chat by phone. Dan talked to Ross (IAC director) - he doesn't think this will come to the floor of the Senate for a while and then it has to go to the House.

## **5. FSA Update**

Susan passed out a report (attached). They are waiting to see what happens in the Farm Bill. One of their big programs is going to be cut. The office in Rhinelander will be downsized and open 2 days a week (Monday and Tuesday from 8 – 4). She is being moved to Portage, Wisconsin. Susan will stay with the Tribes instead of just having the local person there. She

feels she will continue and she may also bring locale people to future meetings. Pat Pelky talked to Brad in Iowa; he had hoped he would be here. He will try to make the next meeting.

They are no longer producing paper newsletters, now just through email. Minority Farm Register is attached to the handout. You can voluntarily join to receive information and opportunities for minority farmers.

Their programs are more targeted at individual Tribal farmers not the Tribe as a whole. How do we do a better job of reaching out to the individual farmer? She thinks that FSA needs to go out and meet with people individually. How do we reach individuals? Address in strategic plan.

### **6. APHIS Update**

They are having folks dropping like flies as they had a buyout offer. They are losing the EAB Coordinator for the eastern region. Dr. Dutcher send email on Monday – he is leaving June 3 to take a District Director Position in Minneapolis. They are looking at reducing state office staff by about 50%. This may be last year of EAB trapping.

She brought traps with her; they had the initial order so she can only give us that. She doesn't have replacement lure at this point. It would be best if we can get the traps up by the end of May.

Jerry and JoAnn had worked on proposals for Farm Bill funding but she has not heard anything on it. The tabletop with Menominee was yesterday and she thought it went well – really good participation. No update on VHS and CWD. Very informal response came back in email; Dr. Deveau said he wasn't certain if there would be additional funding. St Croix had gathered some heads to have tested. He also thought that the VHS funding was going away. No new EAB finds in Wisconsin. They are looking at dropping the state line quarantines for EAB. Not spreading as fast as they thought it would – maybe because of how many ash trees we have and it doesn't need to spread to find trees.

### **7. Rural Development Update**

Donna Huebner (PowerPoint Attached). Ten years before WTCAC, RD invested about \$12 million in Tribal projects. This consisted of approximately \$3 million in loans and 8 million in grants. Since 2001, they have invested \$66 million in Tribal projects. This included \$24.5 million in loans and \$46 million in grants. The funding for grants has been really cut so the numbers in 2011 and 2012 have plummeted. They will be working with the Tribes looking at a more comprehensive capital needs plans. What can we do to help improve access to RD from the Tribal perspective?

The Area Director in Spooner is retiring. They have 6 area offices and had 6 directors and now they are moving to shared management and only 3 area directors. They have a hiring freeze so when people leave they can't hire new people. They are looking at regionalization of administrative duties. They are centralizing Guaranteed Housing Delivery.

Community Facility Program – they have lots of funding available. Know Your Farmer, Know Your Food Program – she thinks this could work well with Tribes. They also have funding for health care, narrow banding (Emergency Management Radios), regional projects, and child care. RD did not help finance the hoop house at Red Cliff last year but could have if they had applied. It would be an eligible community facility use. They are looking at bringing produce from community farms into schools and elder homes – grants available to help with this. Median household income has to be under \$42,000 to qualify for grants.

Water and Waste Programs – need loan applications for next year. 306-C funding for tribes only and they haven't had an application in a couple of years and they have money for it. Money for expanding water and sewer lines into a new housing development, updating treatment plants, etc.

Business programs – Rural Energy for America Program (REAP) and Rural Business Enterprise Grant (RBEG) already scored for this year. Rural Community Development Initiative (RCDI) grant applications due May 9. Dan was working with some Tribes and producers on the Value Added Producer Program (VAPG) last year and they ran into some eligibility issues with it. Looking to dramatically expand eligibility and in many cases the Tribe itself may qualify. Tribe may be able to apply for wild rice for example for marketing study or working capital. It cannot finance bricks and mortar. Upgrade to vacuum system for maple syrup, is that eligible? Is it an operating expense, then yes, otherwise probably not? There are Farm Labor Housing funds available.

### **8. EPA Update**

Jim Ruppel – Jim emailed out the update (attached). TEA agreements are finally available, templates have been drafted, and EPA programs have put implementation information in there. He will be sending out to environmental directors so we can view and add our parts. We can talk to Jim or talk to programs directly. Jerry discussed the latest round of GLRI funding. Jerry can put together an application for Tribes. Jerry will talk to Tom Melnarik about WisCorps involvement. RTOC has been set for 7 – 9 of August possibly at Red Cliff. The Tribal Caucus a month before in Michigan at the BIA conference.

### **9. IAC Update**

Tribal food producer summit last week in Oneida, he thinks it went very well. Main intent was to bring folks together who work on tribal food issues to get people talking and to get to know one another to try and create a producer network. Pat Pelky came in and did an overview of

WTCAC, Shari talked about some NRCS programs more specifically. Jason Fishbach, leader of hazelnut project, gave a presentation on agroforestry. They had 35 – 40 participants consistently there with 55 registered. They are going to try and do a follow up meeting later this summer and hopefully hold the summit again next year. How can WTCAC provide more support for agricultural operations and individual producers? They got a grant to cover lodging and to get people there only 2.5 weeks before the summit.

Agroforestry – he is trying to get up to speed on some of the USFS programs to find more opportunities to make connections to bring more of the USFS resources to Tribes.

IAC continuing to work on Farm Bill and give updates as things move along.

Working with a couple of different tribes to figure out how to bring in folks that are working on food and other agricultural issues and pull together some meetings to discuss this.

IAC Great Lakes ([iacgreatlakes.com](http://iacgreatlakes.com)) is the regional website he is maintaining and he is going to get the presentations from the Summit on the website as well as grant opportunities.  
[iacgreatlakes.com](http://iacgreatlakes.com)

#### **10. EQIP 2<sup>nd</sup> Sign Up**

Ho-Chunk, FCPC and Lac du Flambeau all have applications.

Ho-Chunk – Access Road for a total of \$13,050

FCPC – Forest trails for a total of \$6,748

Lac du Flambeau – Aquaculture Pond for a total of \$58,917

The total request if for \$78,714 and we only have approximately \$52,000 remaining.

**MOTION:** Motion to approve up to an additional \$13,050 in 2012 EQIP funding for Ho-Chunk's. Motion by Mole Lake, seconded by Stockbridge-Munsee. All ayes, zero opposed, Ho-Chunk abstains, motion carried.

**MOTION:** Motion to approve up to an additional \$6,748 in 2012 EQIP funding for FCPC. Motion by Mole Lake, seconded by Bad River. All ayes, zero opposed, FCPC abstains, motion carried.

**MOTION:** Motion to ask Pat Leavenworth for additional slippage funds to cover Lac Du Flambeau's EQIP request. Motion by Stockbridge-Munsee, seconded by LCO. All ayes, zero opposed, motion carried.

Pat Pelky will write a letter to Pat Leavenworth to ask for additional funds.

## **11. Program Manager Report**

### *Internship Program Update*

Jerry developed the student timesheets and emailed them out. June 4<sup>th</sup> is orientation day at Medford Service Center starting at 9:30 and should be done by 2:30. Supervisors should follow up with the students to get their W-4 and I-9 forms before they start. Platteville Production challenge is June 11 – 14. WTCAC will just be paying them via direct deposit.

### *Endowment/Non-Profit Fundraising*

Madison Community Foundation – Jerry contacted them and talked to the Vice President for quite awhile. We still have to raise the money and invest it with a community foundation. The one in Madison will give us \$300,000 and then we would have 3 years to raise another \$300,000. We could invest with this company, but they couldn't give us the \$300,000 as they can only give funds to places in Dane County. FCPC Foundation and the National Fish and Wildlife Foundation were other ideas. We need to look at a three tiered funding level approach. Fully funded we need \$300K, if we had that funding level what could we do? Where is our minimum operation level (the 1 or 2 things we want to do every year), what does that cost?

### *APHIS Farm Bill Applications*

He hasn't heard anything back on them. Taking Dan's idea for having a 3 State TCAC meeting, he put in a request for funds. We could also talk to the Tribes about forming a Tri-state tribal docket.

### *First Stewards Climate Symposium*

He didn't get any response on how we can interact with this. He thought that maybe Jeff Mears could go? There is an NTOC in DC the same week so maybe Tom Maulson could go talk about how climate change has affected the Tribes. WTCAC would like to see if Jeff Mears can go. Jerry will contact him.

### *2501 Extension Request and Quarterly Report*

He handed out the report. He has not heard anything about the extension and he was supposed to hear by February.

### *Arizona*

Randy, Keith, and I are leaving Sunday. Travel already approved. They have 64 tribal folks and 20 – 30 federal folks signed up.

### *Alaska*



It is now the 21 and 22<sup>nd</sup> of August. Travel was already approved.

### *California*

He had a long talk with California State Conservationist and August 1 – 8 is the dates for that. It only needs to be Jerry because these are introductory types of sessions. On the 1<sup>st</sup> and 2<sup>nd</sup> they will be in Fresno area on the 6<sup>th</sup> and 7<sup>th</sup> they have a session in Eureka, and another session with the Hoopa Tribe on the 8. Leaving July 31 and flying back home on the August 9.

**MOTION:** Motion to approve travel for Jerry to California and to rent a car. Motion by Ho-Chunk, seconded by Stockbridge-Munsee. All ayes, zero opposed, motion carried.

We may be sponsoring Tribal scholarships for the Tribes to attend. State Conservationist set aside \$1 million for tribes as the tribes had trouble ranking well. He would like to organize in clusters and then have a state TCAC like us with representatives from the clusters.

### *Montana*

July 16 – 20, this just came up. We would have minimal participation. We won't be sponsoring anything. Dick Gooby wants WTCAC there on Wednesday. Go out there on Monday, come back on Thursday.

**MOTION:** Motion to approve travel for Jerry to Montana. Motion by FCPC, seconded by Stockbridge-Munsee. All ayes, zero opposed, motion carried.

### *Instate TCAC Training*

If we get the extension, should we do another instate training? What are everyone's thoughts on doing a basic TCAC training? We will talk tomorrow.

### *VHS*

St Croix is doing well and they figure they will be done this week or next. This is the last of the VHS sampling.

### *Request Items for Purchase*

**MOTION:** Motion to approve the purchase of a printer. Motion by LCO, seconded by Stockbridge-Munsee. All ayes, zero opposed, motion carried.

**MOTION:** Motion to approve the purchase of a projector. Motion by Mole Lake, seconded by LCO. All ayes, zero opposed, motion carried.

**MOTION:** Motion to approve up to \$1,000 for the purchase of a computer as long as it is an eligible purchase under the 2501 grant. Motion by LCO, seconded by Stockbridge-Munsee. All ayes, zero opposed, motion carried.

### **12. President's Report**

Pat Pelky spent a day with Jerry and man he does a lot. We need to look into having someone else work on the webpage. He will be bringing a report back to say where we could use help. Need to start a training program for Jerry's backup. Iowa Listening Session - The lasting impression he was left with is that it is not a Farm Bill anymore; it is a food, farms, and jobs bill. He shared WTCAC's booklet with Secretary Vilsack and he shared him what can happen in Indian Country. He is looking for different partnerships. The Secretary seems excited about advisory groups. Biggest thing he left him with is we have to find better ways to access all USDA programs. Brad Pfaff would like to expand FSA's role to have more presence at WTCAC meetings. He presented at the Food Summit and the biggest thing in got out of the meeting is we are not reaching the individual tribal member as there may be a need out there.

### **13. FSA – Brad Pfaff**

He spoke to Pat Pelky about the importance of having FSA at WTCAC. He told Pat that they would continue to do that. They have had a reduction in funding and personnel. Susan will now be in Columbia County, he is here to let us know that they are not walking away from our partnership. They have enough resources to continue to do what they do and do more. They just need to make sure they use those resources. Susan will continue to be the lead liaison with this group, but he has also asked the state FSA agency to really recognize the diverse partners they have. They have County Executive Directors in 56 of the 72 Wisconsin counties. Why aren't some of the other County Executives as outgoing as Susan and he has challenged them to step up. He would like to see FSA be able to work with all of us on what kind of loan dollars and production support dollars are available. He is committed that there agency reaches all of rural Wisconsin. Susan will continue to be here and he is expecting that the county directors throughout the state are working with us, tribal members, and tribal leaders. He wants us to have local county executives at future WTCAC meeting. He admitted that FSA needs to learn, but he would like to have his people share with us how. Minority advisors can be appointed as an advisory member of county committees. Randy said he could help identify Tribal producers for recommendation to the committees. They don't have grants but they have loans. If we have Tribal members interested in production agriculture, think about FSA, they can help. They work very closely with beginning farmers that have had trouble getting conventional lending.

**MOTION:** Motion to adjourn for the day. Motion by Stockbridge-Munsee, seconded by Ho-Chunk. All ayes, zero opposed, motion carried. Meeting adjourned at 4:41 pm.

**May 3, 2012**

Meeting called to order at 8:06am by Pat Pelky.

**14. Roll Call**

Present: Bad River (Lacey Hill), FCPC (Nate Guldán, Frank Shepard), Ho-Chunk (Randy Poelma), LCO (Brett McConnell), Mole Lake (Tina Van Zile), Oneida (Pat Pelky). Quorum present.

**15. Program Manager Report (continued)**

*Arizona Training*

Can we pay some per diem to tribes at the training? Some of them cannot afford the costs up front.

**MOTION:** Motion to approve the WTCAC Treasurer to sign 22 checks so that Jerry can pay per diem and travel for up to 20 participants, the meeting room expenses, and the hotel rooms. Motion by FCPC, seconded by Ho-Chunk. All ayes, zero opposed, motion carried.

*Farm Bill*

Can we indicate in the Farm Bill that some tribes need funds up front? EQIP used to have program education funds set aside so that certain groups could ask for money for outreach. They removed this in 1998. Limited resource could request a certain amount upfront.

*Credit Card*

Jerry needs to look into getting a WTCAC credit card. Check into our bank for the card.

*First Stewards Climate Symposium*

Jeff Mears indicated he could possibly use GAP funds to go to the First Stewards Climate Symposium.

**16. Letterhead**

Pat handed out WTCAC's draft letterhead. Pat's staff will work on envelopes with letterhead as well. It was suggested that GLIFWIC should be removed from the letterhead, remove hyperlink, and remove Oneida Environmental Health and Safety Division.

**17. Assignment Updates**

Tina is setting up call to discuss WTCAC's role as the Wisconsin Tribal Caucus. It will probably be on May 9.

Pat Pelky contacted Brad on the liaison issue.

Jerry still needs to get a legal opinion on the left over money on from Oneida's Sugar Camp Project.

Brett purchased the fishing pole for Jonathan and spent approximately \$330.

Pat Pelky sent a letter to INCA indicating that we would like to refill Jonathan's position on their Board with Tina VanZile. They responded that Jonathan has agreed to serve out his term. Jerry will check with INCA to see when his term is up.

Jerry standardized the employees' timesheets. They will email them to the WTCAC representatives monthly.

### **18. Special Project Updates**

#### Oneida Invasive Species

He is wrapping things up and could probably come to the next meeting. This has been paid for and he is finishing the report.

#### LCO Floating Raceway

They will be ordering all the stuff and they will be putting them in. They had to wait until eggs hatched and they probably will get going in June and they hope to use it this year yet.

#### Bad River Wild Rice

They are going to be having interviews for the technician to work on it next week.

#### Stockbridge-Munsee Floating Raceway Remote Site

Luke said they still have not requested permission from the Tribal Council to actually apply for the project. They plan to take it to their Council next week. Jerry would like to see it before it comes back to WTCAC for final approval to make sure it meets the intent of the grant.

### **19. Employee Handbook Revisions**

Changes:

- Add page numbers if you can
- Change statue to statute
- Jerry will look into Tribal preference as a non-profit and add a paragraph if we can use Tribal preference
- Change Council President to WTCAC President
- Remove reference to Personnel Committee

**MOTION:** Motion to approve the employment policy with changes. Motion by LCO, seconded by FCPC. All ayes, zero opposed, motion carried.

#### **20. Website Update**

Jerry isn't comfortable updating the website. He will talk to Jordan to see what he would charge. Jerry needs to be on the website as the main contact.

#### **21. Financial Report**

Jerry passed out the budget. Everything is on track. Jerry will draft up a letter for Pat to sign to the IRS to request our \$4,000 back. Jerry will get taxes done as well. There is still \$27,524 set aside for Stockbridge-Munsee's floating raceway project.

#### **22. Executive Session**

There was no need to go into Executive Session. Pat will check on the appropriateness of an executive session for a non-profit.

#### **23. Strategic Plan and Task List**

Working session on the Strategic Plan and Task List

#### **24. Next Meeting**

The next meeting is scheduled for June 20<sup>th</sup> at Menominee. Pat will contact Jeremy to schedule the meeting.

#### **25. Board Insurance**

Jerry contacted an insurance agency. Jerry will get quotes.

Directors and officers – lawsuits, demand, competitors, share holders, federal government. It protects us in lawsuits.

Employment practices liability insurance – damage relating to work force (discrimination, etc).

Professional Liability insurance – coverage for services we are providing to others – NRCS agreed to take on all the engineering liability for WTCAC.

**MOTION:** Motion to adjourn. Motion by Ho-Chunk, seconded by Bad River. All ayes, zero opposed, motion carried. Meeting adjourned at 3:10 pm.



## **ATTACHMENTS**







## **ATTACHMENTS**



# Wisconsin Soil Survey Program

## What are soils?

Soil is a natural body of solids, liquid, and gases, with either horizons, or layers or the ability to support rooted plants.

## Why do we care about soils?

Soils perform vital functions:

- Sustaining plant and animal life below the surface;
- Regulating and partitioning water and solute flow;
- Filtering, buffering, degrading, immobilizing, and detoxifying;
- Storing and cycling nutrients;
- Providing support to structures.

Understanding the building blocks and properties of soil will guide management for vegetation and improve the soil quality overall. Enhanced soil quality can help reduce the onsite and offsite costs of soil erosion, improve water and nutrient use efficiencies, and ensure that the resource is sustained for future use.

## Soil type makes significant differences in tree growth

### Unscreened loam soil

Clumps of soil, or peds, retain original soil structure. Macropores are the spaces between the peds. Unscreened loam soils have ideal plant available water AND drainage.



- **Retain soil/ped structure**
- **Good macropore and micropore space**
- **Excellent plant available water**

### Screened sandy soil mixes

All most all soil structure is lost. High sand content reduces plant available water due to loss of micropores.

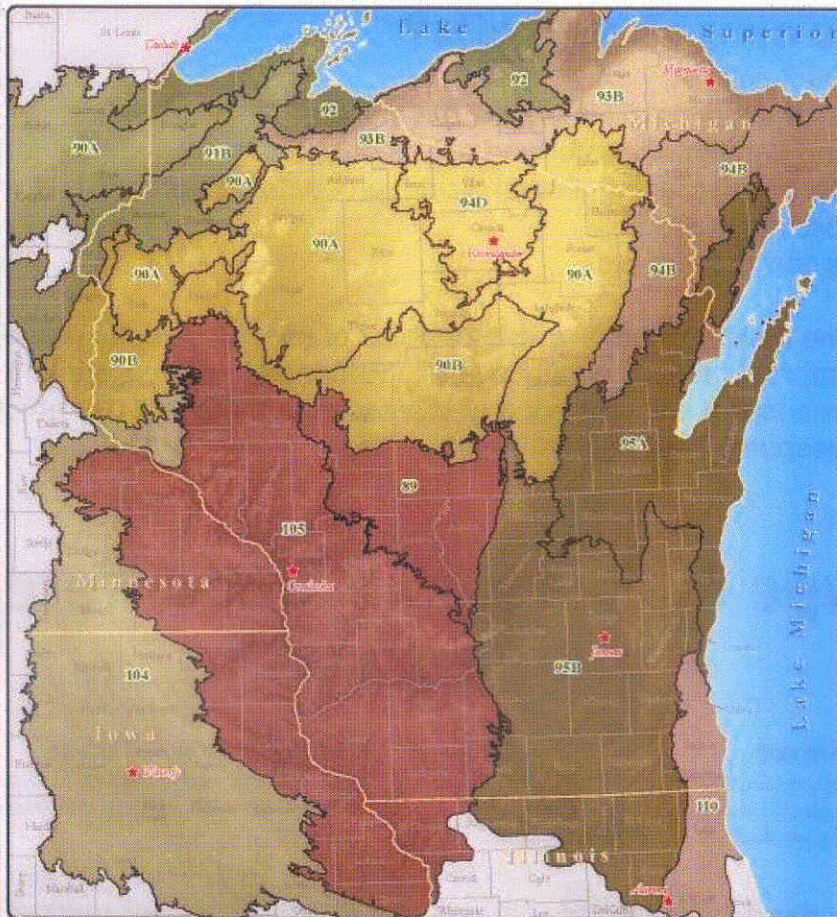


- **No structure**
- **Limited micropore space**
- **Limited plant-available water**

Samantha Lawien  
Soil Scientist  
MLRA Juneau Office  
Samantha.lawien@wi.usda.gov  
920-386-9999 x 114

## What is Soil Survey ?

Soil Survey has a great and everlasting history beginning in the early 1900's. Over the years and different administrations, Soil Survey has morphed and evolved to maintain relevance to suit the customer's needs. Most field workers are housed in Major Land Resource Area (MLRA) offices. The soil scientists are working with raw data to help make the soil survey more accurate, done with the help of newer technologies and procedures. The result of the improvements will provide data that is more useful to the customer and allow them to make better management decisions on the land.



## Contact Information:

Rhineland Office

Scott Eversoll—  
715-362-5941 x 125

Onalaska Office

Kevin Traastad—  
608-782-0180 x 105

Juneau Office

Chris Miller—  
920-386-9999 x 128

## How Soil Surveys Can Help You?

The USDA Natural Resources Conservation Service (NRCS), in cooperation with other federal, state and local agencies, has completed soil surveys for over 95 percent of the counties in the United States. For the past 75 years, hundreds of soil scientists devoted their careers to field mapping and soils studies so that citizens, businesses and units of government could better understand the land. In the past soils maps and information about the soil types were published in the form of county-wide soil survey reports. They were expensive to print, went out of date over time, and were somewhat difficult to use. In order to make soils information easier to access and use as well as keep it updated, the NRCS has digitized the soil maps, soils data, and soils reports and made them available free of charge on the internet. Online soil surveys provide quick and easy access to important information for landowners and land managers. For those who are more advanced or are using software that can process spatial and tabular data, geodata is available through various resources.

## Soil Digital Products:

- These products are available to public and internal users
- Allows user to get specific information easily
- Most importantly, it uses the most CURRENT information available

### Products that are available

- Web Soil Survey  
<http://websoilsurvey.nrcs.usda.gov/app/HomePage.htm>  
This puts soils information all in one place that is as user friendly as a web application for soils can be. A user can create personalized maps and generate personalized reports.
- Geospatial Data Gateway  
<http://datagateway.nrcs.usda.gov/>  
This site allows the user to download imagery from all over the nation. There are quite a few maps such as census data, topographic maps, geology maps, and climate maps.
- Soil Data Mart  
<http://soildatamart.nrcs.usda.gov/>  
This site makes current soils data available for any user. For those who can work with spatial and tabular data with an ESRI software, this product may be less limiting compared to Web Soil Survey. A user can subscribe to an area and when an update is available the user will be sent a notification. This data is the full set of data that is available to USDA Soil Scientists.
- Soil Data Viewer  
<http://soils.usda.gov/sdv/>  
This product is an application that must be downloaded from this site and used as an extension in ArcMap. Through this product a user can create thematic maps and personalized interpretations through joins and relates within the GIS software.
- Smart Phone Web Applications  
Soil Web  
SSurgo Data through ArcMap Application

### Unfamiliar With These Products?

If you are interested in these products and would like some one on one training from your local soil scientist, please call and we will set up an appointment, either come into the office or over the phone! Please be mindful that interpretations may change based on some of the conditions of a soil, this is where the soil scientist can come in and help you choose the right one.






# Air Photo Imagery Jackson County, WI

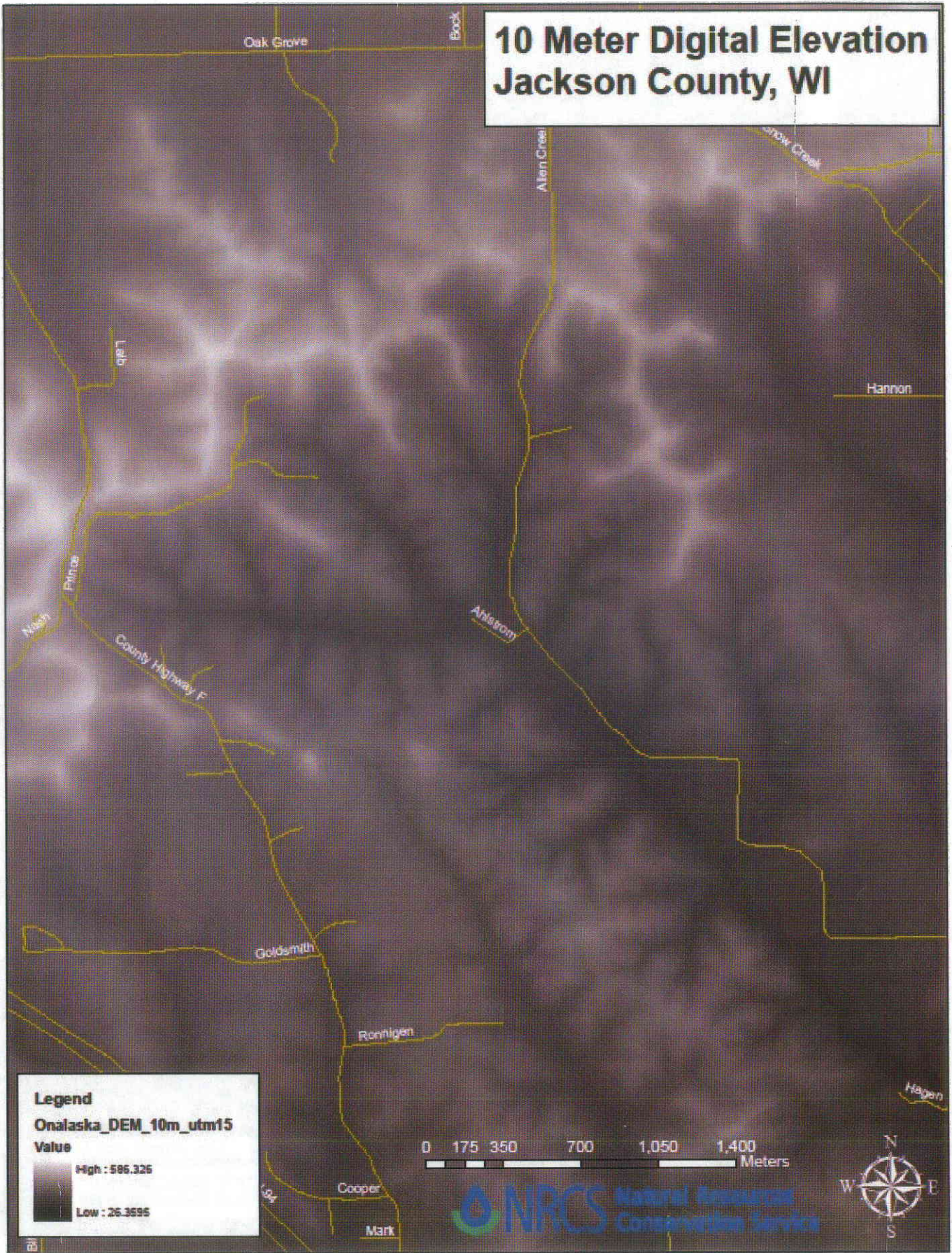


0 115 230 460 690 920 Meters



**NRCS** Natural Resources  
Conservation Service

# 10 Meter Digital Elevation Jackson County, WI



**Legend**  
Onalaska\_DEM\_10m\_utm15  
Value

High : 586.325
Low : 26.3595

0 175 350 700 1,050 1,400 Meters

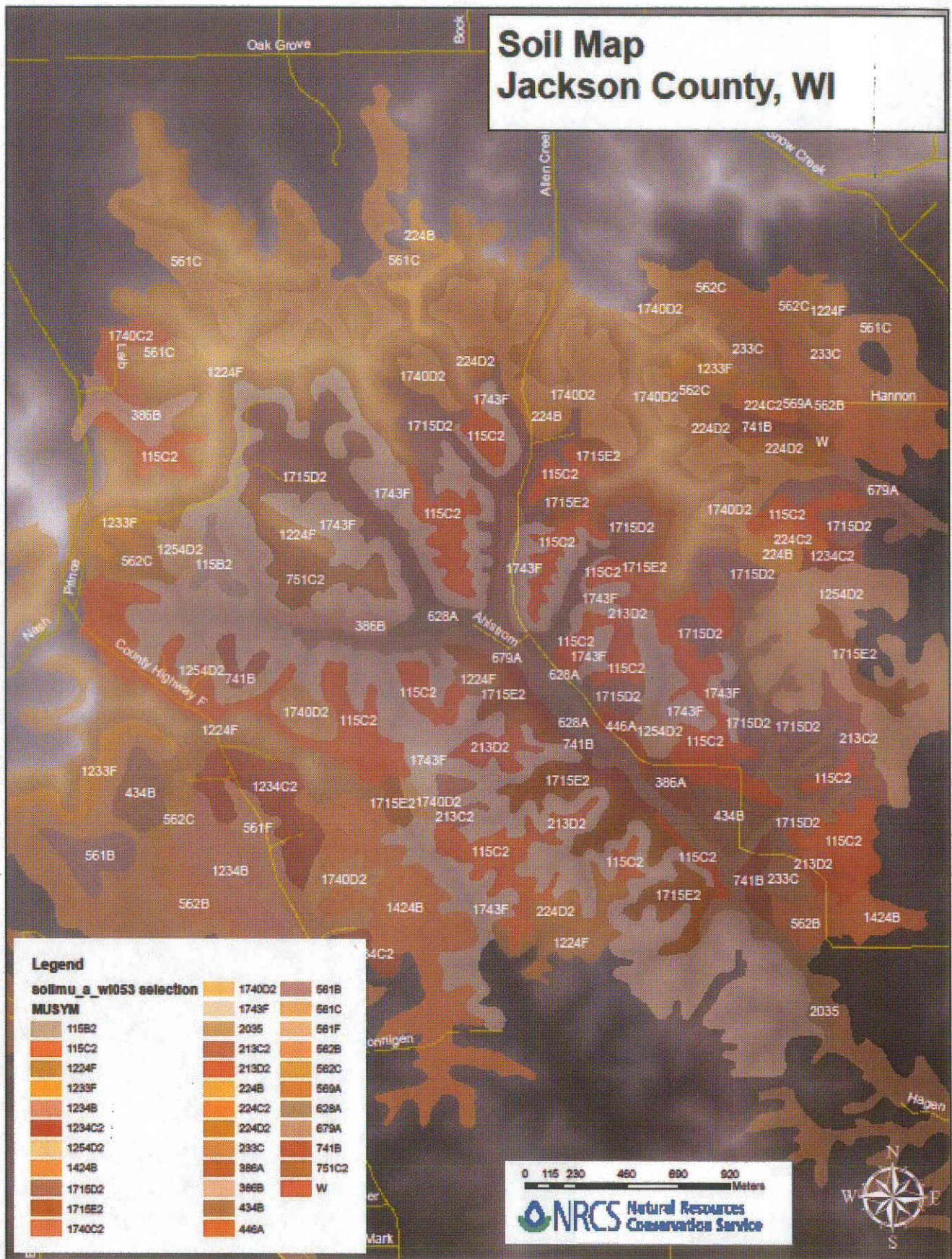
**NRCS** Natural Resources Conservation Service







# Soil Map Jackson County, WI



**Legend**

**solmu\_a\_w1053 selection**

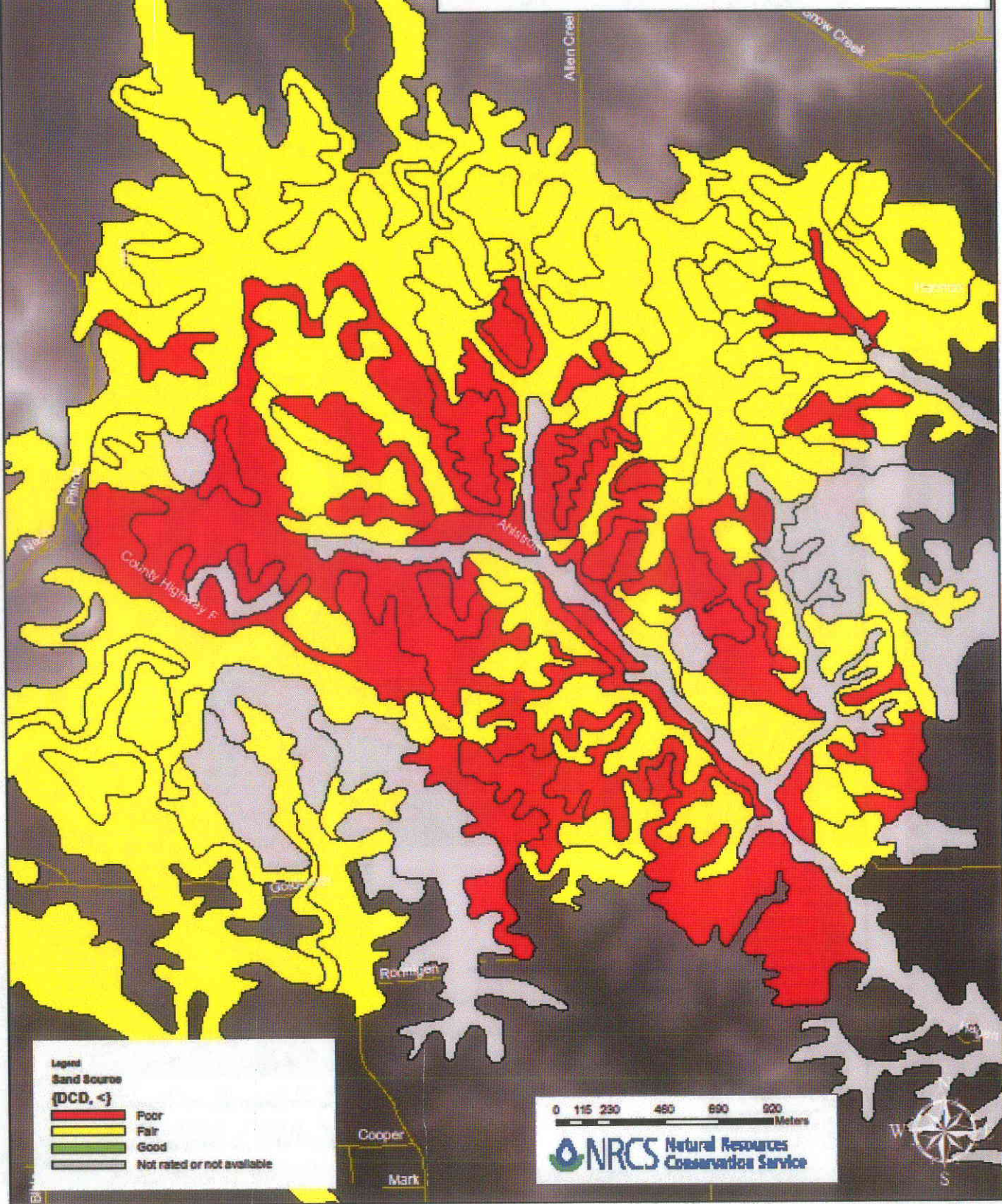
115B2	1740D2	561B
115C2	1743F	561C
1224F	2035	561F
1233F	213C2	562B
1234B	213D2	562C
1234C2	224B	569A
1254D2	224C2	628A
1424B	224D2	679A
1715D2	233C	741B
1715E2	386A	751C2
1740C2	386B	W
	434B	
	446A	

0 115 230 460 690 920 Meters

**NRCS** Natural Resources Conservation Service



# Sand Source Area Potential Jackson County, WI

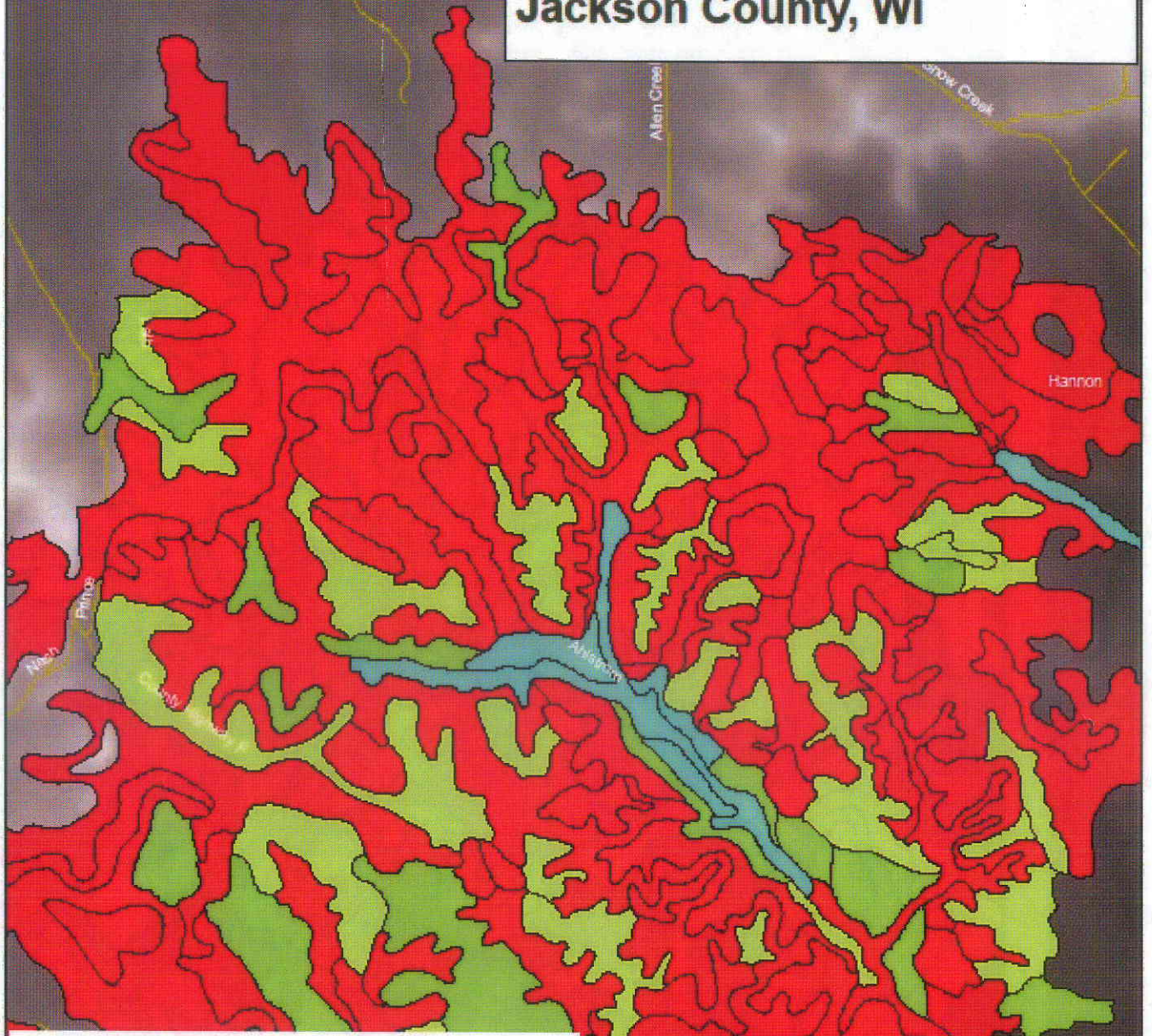


Legend  
Sand Source  
(DCD, <)

	Poor
	Fair
	Good
	Not rated or not available

0 115 230 460 690 920 Meters  
NRCS Natural Resources Conservation Service

# Farmland Classification Map Jackson County, WI



## Legend

- all other values  
(N/A, <)
- Not prime farmland
- All areas are prime farmland
- Prime farmland if drained
- Prime farmland if protected from flooding or not frequently flooded during the growing season
- Prime farmland if irrigated
- Prime farmland if drained and either protected from flooding or not frequently flooded during the growing season
- Prime farmland if irrigated and drained
- Prime farmland if irrigated and either protected from flooding or not frequently flooded during the growing season
- Prime farmland if subsoiled, completely removing the root-inhibiting soil layer
- Prime farmland if irrigated and the product of I (soil erodibility) x C (climate factor) does not exceed 60
- Prime farmland if irrigated and reclaimed of excess salts and sodium
- Farmland of statewide importance
- Farmland of local importance
- Farmland of unique importance
- Not rated or not available

0 115 230 460 690 920  
Meters

**NRCS** Natural Resources  
Conservation Service





United States  
Department  
of Agriculture

Farm and Foreign  
Agricultural  
Services

Farm  
Service  
Agency

OFFV FSA Office  
2187 North Stevens Street, Suite A  
Rhineland, WI 54501-8036

Serving Oneida, Florence, Forest and Vilas Counties  
Phone: 715-362-5941  
Fax: 715-362-9370

## Farm Service Agency (FSA) REPORT TO WTCAC – MAY 2, 2012

By Susan Hunter, (715) 362-5941 ext 104, [susan.hunter@wi.usda.gov](mailto:susan.hunter@wi.usda.gov)

**Future FSA Attendance:** There may be local FSA personnel attending WTCAC meetings in the future to help foster better relationships at the local level. Our agency wants to do all it can to build trust and ensure that the tribes and members are informed of the programs and services offered.

**Reporting 2012 Crop Acreage by July 16th.** Anyone that grows or manages any type of crop, including grains, forages, fruits, vegetables, maple sap, wild rice, etc., should make an appointment with the local FSA office to report the location and acreage of the fields or areas. The deadline to report is July 16<sup>th</sup>. Reporting these acreages and crops to the local FSA office could help ensure possible eligibility for future programs.

**Sign-up For E-News with FSA.** Individuals have the opportunity to receive FSA news via e-mail right to their home or farm office. Electronic mail will enable FSA to keep everyone better informed and allow us to conserve resources and reduce taxpayer expenses associated with the preparation, printing and distribution of hardcopy newsletters.

To begin receiving e-mails from the county FSA office, individuals need to contact their local FSA office to sign-up. Locate the Service Center closest to you.

**Minority Register.** FSA invites minority producers across the nation to voluntarily join the USDA Minority Farm Register to receive information and opportunities from USDA agencies. The Register is a shared outreach list that will help USDA, community-based organizations and minority-serving educational institutions to communicate with minority farmers and ranchers. By joining the Register, minority producers may receive outreach materials, newsletters, and program announcements from USDA agencies. They may also receive information and assistance from other USDA-approved outreach partners, such as community-based organizations, faith-based organizations, and minority-serving educational institutions. USDA will carefully control access to and use of the Register. (See attached form AD-2035)

**Fact Sheets** for all the FSA programs are available at the FSA website: <http://www.fsa.usda.gov> (click on “Find FSA Fact Sheets” in the right hand “I Want To....” column)

**AD-2035**  
(10-13-11)

**U.S. DEPARTMENT OF AGRICULTURE**  
Farm Service Agency

**USDA MINORITY FARM REGISTER**

The Register is a tool to promote equal access to USDA farm programs and services for minority farmland owners, farmers, ranchers, tenants, and other individuals with an agricultural interest. Participants may receive information or personal contact through USDA outreach efforts. USDA programs may include farm or ranch ownership and operating loans and loan guarantees, price and income support, conservation, and others.

**NOTE:** The following statement is made in accordance with the Privacy Act of 1974 (5 USC 552a – as amended). The authority for requesting the information identified on this form is 7 U.S.C. 2279 and the Farm Security and Rural Investment Act of 2002 (Pub. L. 107-171). The information will be used to assist in special minority farm outreach and assistance efforts to better inform minority farm and ranch operators, landowners, tenants, and others with an interest in farming or agriculture about USDA programs and services. The information collected on this form may be disclosed to other Federal, State, Local government agencies, Tribal agencies, and nongovernmental entities that have been authorized access to the information by statute or regulation and/or as described in applicable Routine Uses identified in the System of Records Notice for USDA/FSA-17, Voluntary Minority Farm Register File (Automated). Providing the requested information is voluntary. However, failure to furnish the requested information will result in individuals not being included in certain minority farm outreach and assistance efforts.

According to the Paperwork Reduction Act of 1995, an agency may not conduct or sponsor, and a person is not required to respond to, a collection of information unless it displays a valid OMB control number. The valid OMB control number for this information collection is 0560-0231. The time required to complete this information collection is estimated to average 5 minutes per response, including the time for reviewing instructions, searching existing data sources, gathering and maintaining the data needed, and completing and reviewing the collection of information.

The provisions of appropriate criminal and civil fraud, privacy, and other statutes may be applicable to the information provided. **RETURN THIS COMPLETED FORM TO MINORITY FARM REGISTER, USDA STOP CODE 0503, 1400 INDEPENDENCE AVE., SW, WASHINGTON, DC 20250-0503.**

**I certify that I am voluntarily granting permission to be listed on the USDA Minority Farm Register. I fully understand and agree that my name and the other information provided on this form may be released to organizations other than USDA.**

**Instructions: Items 1 through 4, 5C, 5D, 7A and 7B are optional. You must complete Items 5A, 5B, 6A and 6B.**

1. Ethnicity: Are you Hispanic or Latino? <input type="checkbox"/> YES <input type="checkbox"/> NO	
2. Race: Check the race or races that describe you best.	
<input type="checkbox"/> American Indian or Alaska Native <input type="checkbox"/> Asian <input type="checkbox"/> Black or African American <input type="checkbox"/> White <input type="checkbox"/> Native Hawaiian or Other Pacific Islander <input type="checkbox"/> Other race (specify): _____ (Do not enter Hispanic or Latino here)	
3. Gender: <input type="checkbox"/> Male <input type="checkbox"/> Female	
4. Check one of the following: <input type="checkbox"/> Mr. <input type="checkbox"/> Mrs. <input type="checkbox"/> Ms.	
5A. Name (Last, First, Middle Initial)	
5B. Address (Include City/State/Zip Code)	5C. Telephone Number (Include Area Code)
	5D. E-mail Address:
6A. Signature of Individual	6B. Date (MM-DD-YYYY)
7. Farm or Ranch Location (If applicable):	
7A. State	7B. County

The U.S. Department of Agriculture (USDA) prohibits discrimination in all of its programs and activities on the basis of race, color, national origin, age, disability, and where applicable, sex, marital status, familial status, parental status, religion, sexual orientation, political beliefs, genetic information, reprisal, or because all or part of an individual's income is derived from any public assistance program. (Not all prohibited bases apply to all programs.) Persons with disabilities who require alternative means for communication of program information (Braille, large print, audiotape, etc.) should contact USDA's TARGET Center at (202) 720-2600 (voice and TDD). To file a complaint of discrimination, write to USDA, Assistant Secretary for Civil Rights, Office of the Assistant Secretary for Civil Rights, 1400 Independence Avenue, S.W., Stop 9410, Washington, DC 20250-9410, or call toll-free at (866) 632-9992 (English) or (800) 877-8339 (TDD) or (866) 377-8642 (English Federal-relay) or (800) 845-6136 (Spanish Federal-relay). USDA is an equal opportunity provider and employer.

# WTCAC MEETING

MAY 2, 2012

# Rural Development Investment 10 years prior to WTCAC 1991-2001

- Total Investment      \$11,895,724
  - Loans                              \$3,026,980
  - Grants                              \$8,868,744

# Rural Development Tribal Funding Since 2001

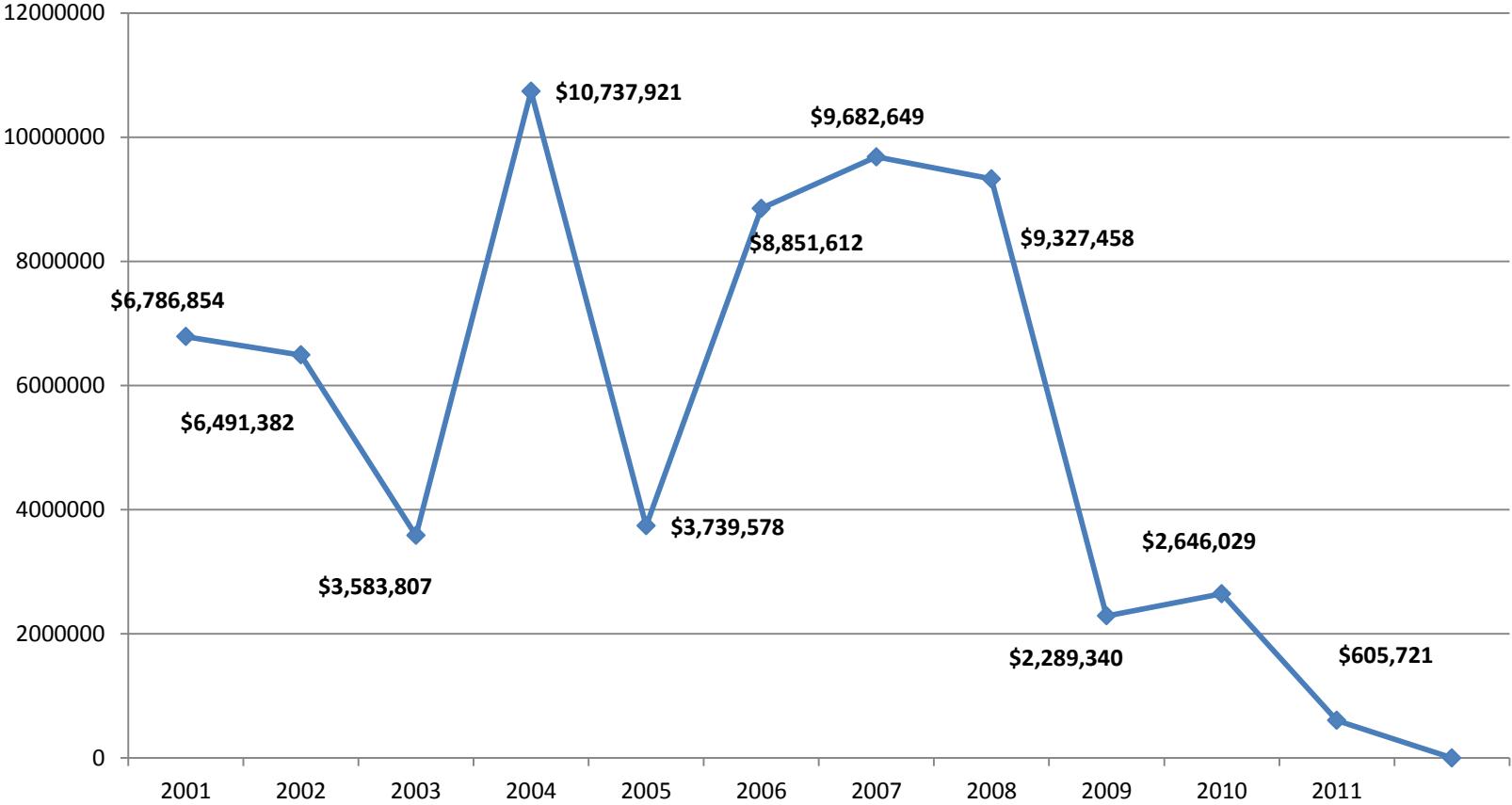
- Total Investment - **\$66,958,426**

Loans	\$24,579,482
Grants	\$46,273,271
- Includes technical assistance grants provided to non-profits working with Tribes.
- Above amounts do not include rental subsidy or single family housing loans.

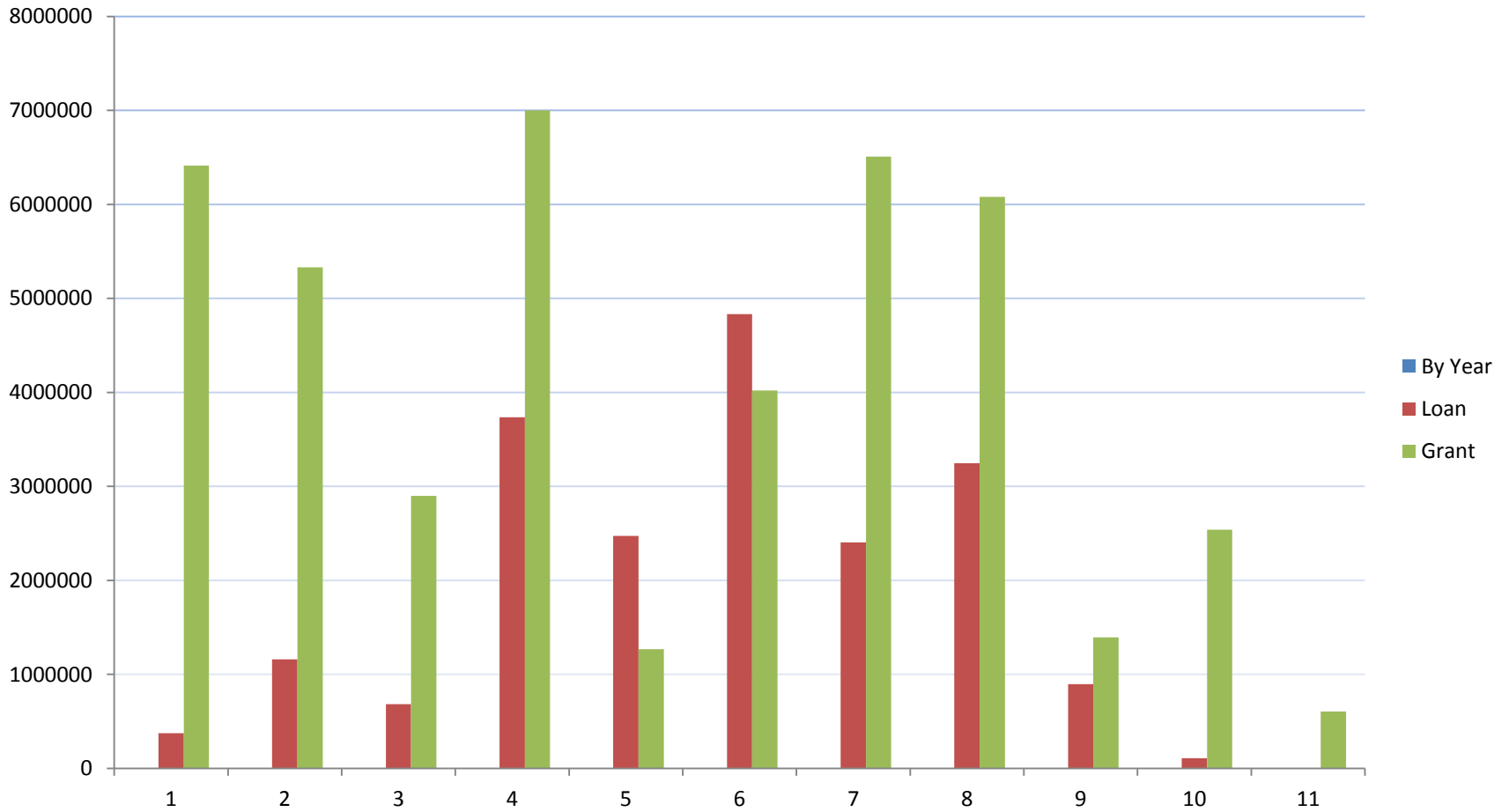




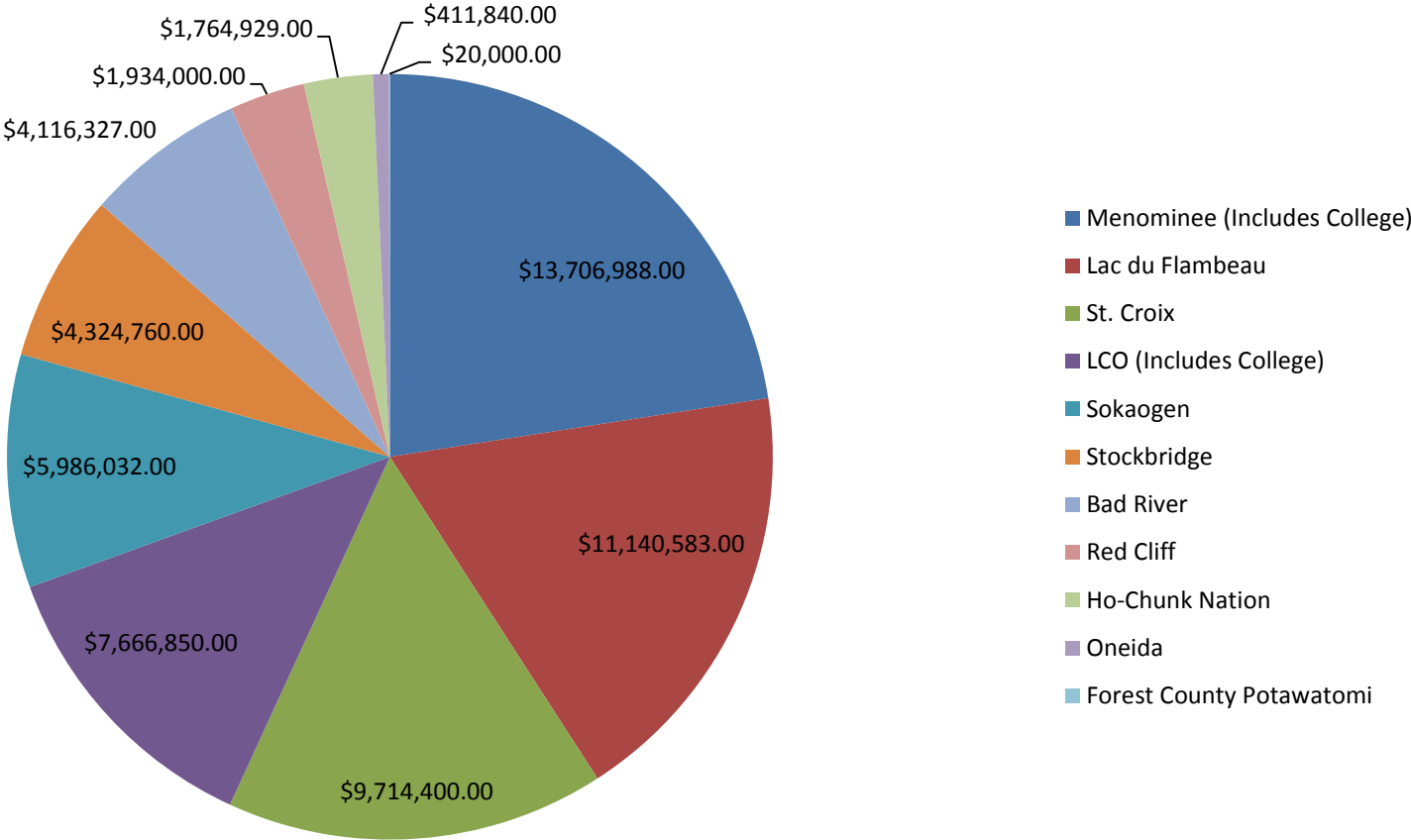
# Annual Investment



# Loan/Grant Investment per year



# Funding by Tribe



Above amounts do not include Non-profits working with Tribes

# Structure Changes

- Cora Schultz – Area Director Spooner – retiring
- Hiring Freeze
- Shared Management Area Offices
- Regionalization of Administrative Duties
- Centralize Guaranteed Housing Delivery
- Foreclosures – Real Estate Owned to CSC



# Community Facility Program

- Loan Funding Available
- Grants – Initiatives only
  - Know your farmer – know your food
    - Community Kitchens, Greenhouses, Roadside Stands
  - Health Care
  - Narrow Banding
  - Regional Projects
  - Child Care
- Utilize Capital Needs Plan

# Water and Waste Programs

- Need loan applications for next year
- 306-C Funding
- Servicing
- Spend existing funds



# Business Programs

- Majority of Programs Oversubscribed
- REAP and RBEG already scored for this year
- RCDI – applications due May 9
- VAPG – NOFA not out yet
- Emphasis on servicing portfolio
- Start early – plan ahead

# Housing

- Farm Labor Housing funds available
- Single Family Guaranteed Loan funds adequate
- Direct loans 40/60 ratio – looking for very low income applicants
- 504 repair program – loan and grant available
- Working on Tribal Trust Foreclosures



# Questions

Donna Huebner

Rural Development Coordinator

4949 Kirschling Court

Stevens Point, WI 54481

[donna.huebner@wi.usda.gov](mailto:donna.huebner@wi.usda.gov)

Tel. No. (715) 345-7600 ext. 173

Mobile (715) 340-3682

## WTCAC – EPA Region V Updates/Info May 2012

- Energy Development on Tribal Lands Course  
Instructed by the U.S. Department of the Interior and other Indian country experts  
Minneapolis, Minnesota, on July 30-31, 2012.  
Reduced registration rate is available [through July 20, 2012](#).  
<http://teeic.anl.gov/news/>
- \$20 Million Available for Clean Diesel Projects  
The closing date for receipt of proposals is [June 4, 2012](#).  
<http://www.epa.gov/otaq/diesel/prgnational.htm>
- Tribal Climate Change Webinars: Institute for Tribal Environmental Professionals (see ePacket)  
“The National Climate Assessment: An Update on the Tribal Chapter”  
Tuesday, May 15, 2012 1:00 PM - 3:00 PM CDT  
Thursday, May 17, 2012 1:00 PM - 3:00 PM CDT
- Upcoming Events on the National Tribal Calendar (see ePacket for complete calendar)  
*May 8-10 National Tribal Healthy Homes & Energy Efficiency Conference, Sault Sainte Marie, Michigan*  
*May 14-17 ATNI Mid-Yr. Conference, Pendleton, OR*  
*May 15-17 3rd Annual Tribal Utilities Summit, Niagara Falls, NY*  
*May 22-24 National Tribal Forum on Air Quality, Tulsa, OK*  
*May 29-June 4 2012 Exchange Network National Meeting, Philadelphia, PA*  
*June 3-8 SAIGE Ninth Annual National Training Program, Denver, CO*
- Status of Tribal Environmental Agreement Renewal Process  
WI TEA templates are now available and will be emailed to Tribal Environmental Directors soon.
- Need updated contact info for WI Tribes  
EPA Database needs to be kept up to date to avoid delays in notifications.  
Existing contacts sheet for update included in ePacket and passed at WTCAC.
- EPA Climate Change Adaptation Plan Consultation [Closes 05/15/12](#)  
Gerald Filbin - 202-566-2182 - [Filbin.Gerald@epamail.epa.gov](mailto:Filbin.Gerald@epamail.epa.gov)
- Draft National Water Program Strategy: Response to Climate Change (2012)  
<http://water.epa.gov/scitech/climatechange/2012-National-Water-Program-Strategy.cfm>  
See above link or additional info in ePacket for instructions on how to comment.
- Webinar Clearing up Climate Confusion - Wednesday, [May 16, 2012, 1:00-2:00 p.m. EDT](#)  
Union of Concerned Scientists – Facts and Talking Points for Communicating with Public  
Sign Up Online: [http://www.ucsusa.org/global\\_warming/what\\_you\\_can\\_do/desk-reference.html](http://www.ucsusa.org/global_warming/what_you_can_do/desk-reference.html)
- Public Participation Guide & Toolkit

(Designed to help governments and organizations develop effective ways to engage the public in environmental issues)

Available Online @: <http://www.epa.gov/international/public-participation-guide/index.html>

More Info: Shereen Kandil (EPA DC) [kandil.shereen@epa.gov](mailto:kandil.shereen@epa.gov)

- TRIBAL GREEN CASINOS AND ENVIRONMENTAL TOBACCO SMOKE WORKSHOP  
Week of September 17, 2012 - Grand Portage MN  
More info: Fayette Bright, [bright.fayette@epa.gov](mailto:bright.fayette@epa.gov) , 312-886-6069
  
- Free Energy and Mold Onsite Technical Assistance Visits – HUD  
*“Site visits are FREE and consist of three days of housing energy assessments and technical assistance. The site visit results in a report serving as a plan of action for the tribe to address current and future mold and mildew problems and indoor air quality issues. In addition, the report will recommend strategies for the tribe to improve energy efficiency”*  
Contracted by HUD through FirstPic, Inc  
Site visit form included in ePacket.  
Contact: Sara Fiala 202.393.6400 (p) [sfiala@firstpic.org](mailto:sfiala@firstpic.org)
  
- New trainings posted: <http://water.epa.gov/learn/training/tribaltraining/curriculum12.cfm>
  - Infrastructure Operation and Maintenance (O&M), and Management Training for Tribal Water and Wastewater Operators and Leaders (Several May dates remaining)

## WTCAC – EPA Region V Updates/Info May 2012

- Energy Development on Tribal Lands Course  
Instructed by the U.S. Department of the Interior and other Indian country experts  
Minneapolis, Minnesota, on July 30-31, 2012.  
Reduced registration rate is available [through July 20, 2012](#).  
<http://teeic.anl.gov/news/>
- \$20 Million Available for Clean Diesel Projects  
The closing date for receipt of proposals is [June 4, 2012](#).  
<http://www.epa.gov/otaq/diesel/prgnational.htm>
- Tribal Climate Change Webinars: Institute for Tribal Environmental Professionals (see ePacket)  
“The National Climate Assessment: An Update on the Tribal Chapter”  
Tuesday, May 15, 2012 1:00 PM - 3:00 PM CDT  
Thursday, May 17, 2012 1:00 PM - 3:00 PM CDT
- Upcoming Events on the National Tribal Calendar (see ePacket for complete calendar)  
*May 8-10 National Tribal Healthy Homes & Energy Efficiency Conference, Sault Sainte Marie, Michigan*  
*May 14-17 ATNI Mid-Yr. Conference, Pendleton, OR*  
*May 15-17 3rd Annual Tribal Utilities Summit, Niagara Falls, NY*  
*May 22-24 National Tribal Forum on Air Quality, Tulsa, OK*  
*May 29-June 4 2012 Exchange Network National Meeting, Philadelphia, PA*  
*June 3-8 SAIGE Ninth Annual National Training Program, Denver, CO*
- Status of Tribal Environmental Agreement Renewal Process  
WI TEA templates are now available and will be emailed to Tribal Environmental Directors soon.
- Need updated contact info for WI Tribes  
EPA Database needs to be kept up to date to avoid delays in notifications.  
Existing contacts sheet for update included in ePacket and passed at WTCAC.
- EPA Climate Change Adaptation Plan Consultation [Closes 05/15/12](#)  
Gerald Filbin - 202-566-2182 - [Filbin.Gerald@epamail.epa.gov](mailto:Filbin.Gerald@epamail.epa.gov)
- Draft National Water Program Strategy: Response to Climate Change (2012)  
<http://water.epa.gov/scitech/climatechange/2012-National-Water-Program-Strategy.cfm>  
See above link or additional info in ePacket for instructions on how to comment.
- Webinar Clearing up Climate Confusion - Wednesday, [May 16, 2012, 1:00-2:00 p.m. EDT](#)  
Union of Concerned Scientists – Facts and Talking Points for Communicating with Public  
Sign Up Online: [http://www.ucsusa.org/global\\_warming/what\\_you\\_can\\_do/desk-reference.html](http://www.ucsusa.org/global_warming/what_you_can_do/desk-reference.html)
- Public Participation Guide & Toolkit

(Designed to help governments and organizations develop effective ways to engage the public in environmental issues)

Available Online @: <http://www.epa.gov/international/public-participation-guide/index.html>

More Info: Shereen Kandil (EPA DC) [kandil.shereen@epa.gov](mailto:kandil.shereen@epa.gov)

- TRIBAL GREEN CASINOS AND ENVIRONMENTAL TOBACCO SMOKE WORKSHOP  
Week of September 17, 2012 - Grand Portage MN  
More info: Fayette Bright, [bright.fayette@epa.gov](mailto:bright.fayette@epa.gov) , 312-886-6069
  
- Free Energy and Mold Onsite Technical Assistance Visits – HUD  
*“Site visits are FREE and consist of three days of housing energy assessments and technical assistance. The site visit results in a report serving as a plan of action for the tribe to address current and future mold and mildew problems and indoor air quality issues. In addition, the report will recommend strategies for the tribe to improve energy efficiency”*  
Contracted by HUD through FirstPic, Inc  
Site visit form included in ePacket.  
Contact: Sara Fiala 202.393.6400 (p) [sfiala@firstpic.org](mailto:sfiala@firstpic.org)
  
- New trainings posted: <http://water.epa.gov/learn/training/tribaltraining/curriculum12.cfm>
  - Infrastructure Operation and Maintenance (O&M), and Management Training for Tribal Water and Wastewater Operators and Leaders (Several May dates remaining)



United States  
Department  
of Agriculture

Farm and Foreign  
Agricultural  
Services

Farm  
Service  
Agency

OFFV FSA Office  
2187 North Stevens Street, Suite A  
Rhineland, WI 54501-8036

Serving Oneida, Florence, Forest and Vilas Counties  
Phone: 715-362-5941  
Fax: 715-362-9370

## Farm Service Agency (FSA) REPORT TO WTCAC – MAY 2, 2012

By Susan Hunter, (715) 362-5941 ext 104, [susan.hunter@wi.usda.gov](mailto:susan.hunter@wi.usda.gov)

**Future FSA Attendance:** There may be local FSA personnel attending WTCAC meetings in the future to help foster better relationships at the local level. Our agency wants to do all it can to build trust and ensure that the tribes and members are informed of the programs and services offered.

**Reporting 2012 Crop Acreage by July 16th.** Anyone that grows or manages any type of crop, including grains, forages, fruits, vegetables, maple sap, wild rice, etc., should make an appointment with the local FSA office to report the location and acreage of the fields or areas. The deadline to report is July 16<sup>th</sup>. Reporting these acreages and crops to the local FSA office could help ensure possible eligibility for future programs.

**Sign-up For E-News with FSA.** Individuals have the opportunity to receive FSA news via e-mail right to their home or farm office. Electronic mail will enable FSA to keep everyone better informed and allow us to conserve resources and reduce taxpayer expenses associated with the preparation, printing and distribution of hardcopy newsletters.

To begin receiving e-mails from the county FSA office, individuals need to contact their local FSA office to sign-up. Locate the Service Center closest to you.

**Minority Register.** FSA invites minority producers across the nation to voluntarily join the USDA Minority Farm Register to receive information and opportunities from USDA agencies. The Register is a shared outreach list that will help USDA, community-based organizations and minority-serving educational institutions to communicate with minority farmers and ranchers. By joining the Register, minority producers may receive outreach materials, newsletters, and program announcements from USDA agencies. They may also receive information and assistance from other USDA-approved outreach partners, such as community-based organizations, faith-based organizations, and minority-serving educational institutions. USDA will carefully control access to and use of the Register. (See attached form AD-2035)

**Fact Sheets** for all the FSA programs are available at the FSA website: <http://www.fsa.usda.gov> (click on “Find FSA Fact Sheets” in the right hand “I Want To....” column)

**AD-2035**  
(10-13-11)

**U.S. DEPARTMENT OF AGRICULTURE**  
Farm Service Agency

**USDA MINORITY FARM REGISTER**

The Register is a tool to promote equal access to USDA farm programs and services for minority farmland owners, farmers, ranchers, tenants, and other individuals with an agricultural interest. Participants may receive information or personal contact through USDA outreach efforts. USDA programs may include farm or ranch ownership and operating loans and loan guarantees, price and income support, conservation, and others.

**NOTE:** The following statement is made in accordance with the Privacy Act of 1974 (5 USC 552a – as amended). The authority for requesting the information identified on this form is 7 U.S.C. 2279 and the Farm Security and Rural Investment Act of 2002 (Pub. L. 107-171). The information will be used to assist in special minority farm outreach and assistance efforts to better inform minority farm and ranch operators, landowners, tenants, and others with an interest in farming or agriculture about USDA programs and services. The information collected on this form may be disclosed to other Federal, State, Local government agencies, Tribal agencies, and nongovernmental entities that have been authorized access to the information by statute or regulation and/or as described in applicable Routine Uses identified in the System of Records Notice for USDA/FSA-17, Voluntary Minority Farm Register File (Automated). Providing the requested information is voluntary. However, failure to furnish the requested information will result in individuals not being included in certain minority farm outreach and assistance efforts.

According to the Paperwork Reduction Act of 1995, an agency may not conduct or sponsor, and a person is not required to respond to, a collection of information unless it displays a valid OMB control number. The valid OMB control number for this information collection is 0560-0231. The time required to complete this information collection is estimated to average 5 minutes per response, including the time for reviewing instructions, searching existing data sources, gathering and maintaining the data needed, and completing and reviewing the collection of information.

The provisions of appropriate criminal and civil fraud, privacy, and other statutes may be applicable to the information provided. **RETURN THIS COMPLETED FORM TO MINORITY FARM REGISTER, USDA STOP CODE 0503, 1400 INDEPENDENCE AVE., SW, WASHINGTON, DC 20250-0503.**

**I certify that I am voluntarily granting permission to be listed on the USDA Minority Farm Register. I fully understand and agree that my name and the other information provided on this form may be released to organizations other than USDA.**

**Instructions: Items 1 through 4, 5C, 5D, 7A and 7B are optional. You must complete Items 5A, 5B, 6A and 6B.**

1. Ethnicity: Are you Hispanic or Latino? <input type="checkbox"/> YES <input type="checkbox"/> NO	
2. Race: Check the race or races that describe you best.	
<input type="checkbox"/> American Indian or Alaska Native <input type="checkbox"/> Asian <input type="checkbox"/> Black or African American <input type="checkbox"/> White <input type="checkbox"/> Native Hawaiian or Other Pacific Islander <input type="checkbox"/> Other race (specify): _____ (Do not enter Hispanic or Latino here)	
3. Gender: <input type="checkbox"/> Male <input type="checkbox"/> Female	
4. Check one of the following: <input type="checkbox"/> Mr. <input type="checkbox"/> Mrs. <input type="checkbox"/> Ms.	
5A. Name (Last, First, Middle Initial)	
5B. Address (Include City/State/Zip Code)	5C. Telephone Number (Include Area Code)
	5D. E-mail Address:
6A. Signature of Individual	6B. Date (MM-DD-YYYY)
7. Farm or Ranch Location (If applicable):	
7A. State	7B. County

The U.S. Department of Agriculture (USDA) prohibits discrimination in all of its programs and activities on the basis of race, color, national origin, age, disability, and where applicable, sex, marital status, familial status, parental status, religion, sexual orientation, political beliefs, genetic information, reprisal, or because all or part of an individual's income is derived from any public assistance program. (Not all prohibited bases apply to all programs.) Persons with disabilities who require alternative means for communication of program information (Braille, large print, audiotape, etc.) should contact USDA's TARGET Center at (202) 720-2600 (voice and TDD). To file a complaint of discrimination, write to USDA, Assistant Secretary for Civil Rights, Office of the Assistant Secretary for Civil Rights, 1400 Independence Avenue, S.W., Stop 9410, Washington, DC 20250-9410, or call toll-free at (866) 632-9992 (English) or (800) 877-8339 (TDD) or (866) 377-8642 (English Federal-relay) or (800) 845-6136 (Spanish Federal-relay). USDA is an equal opportunity provider and employer.

# WTCAC MEETING

MAY 2, 2012



# Rural Development Investment 10 years prior to WTCAC 1991-2001

- Total Investment      \$11,895,724
  - Loans                      \$3,026,980
  - Grants                     \$8,868,744

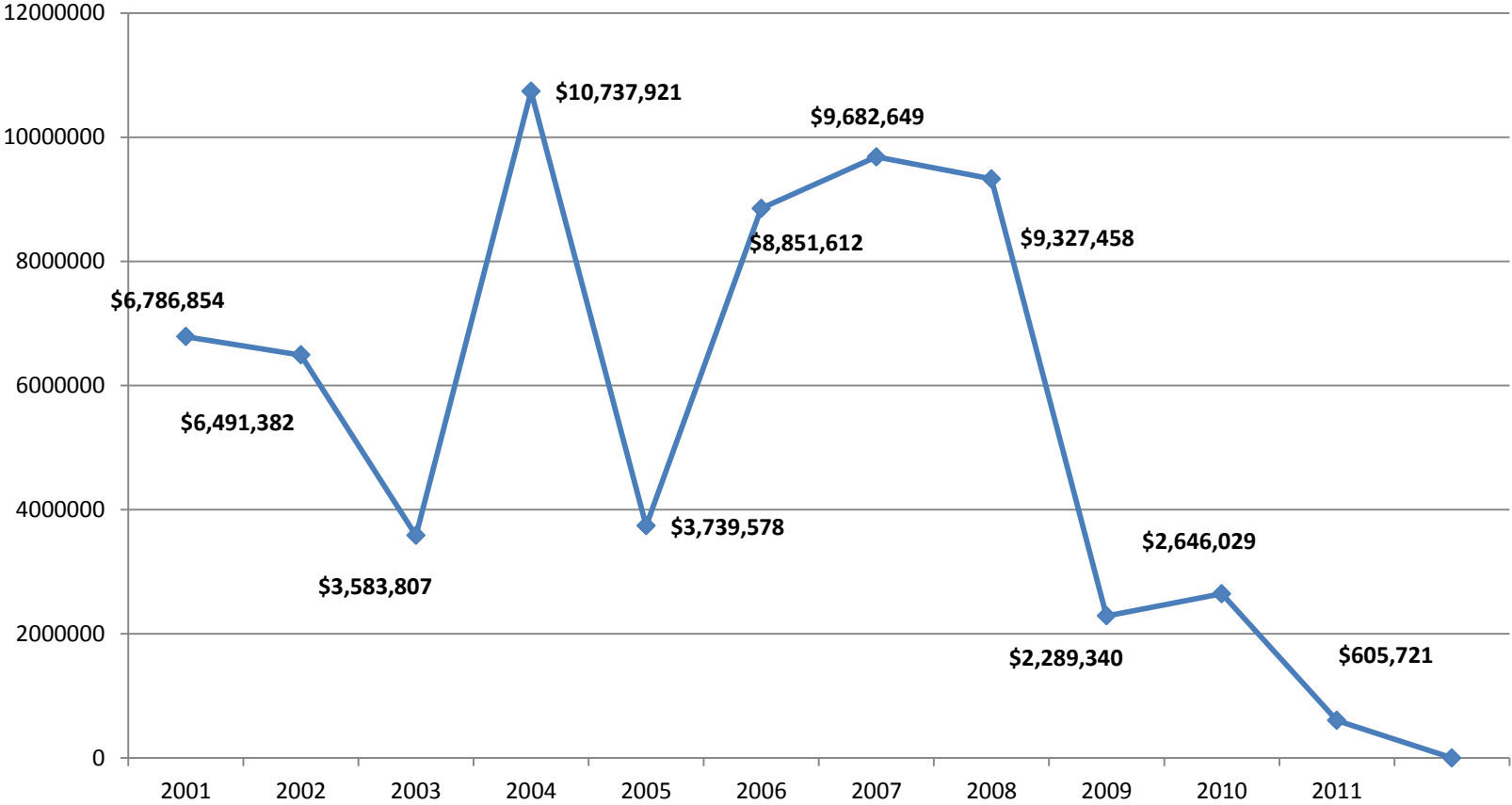
# Rural Development Tribal Funding Since 2001

- Total Investment - **\$66,958,426**

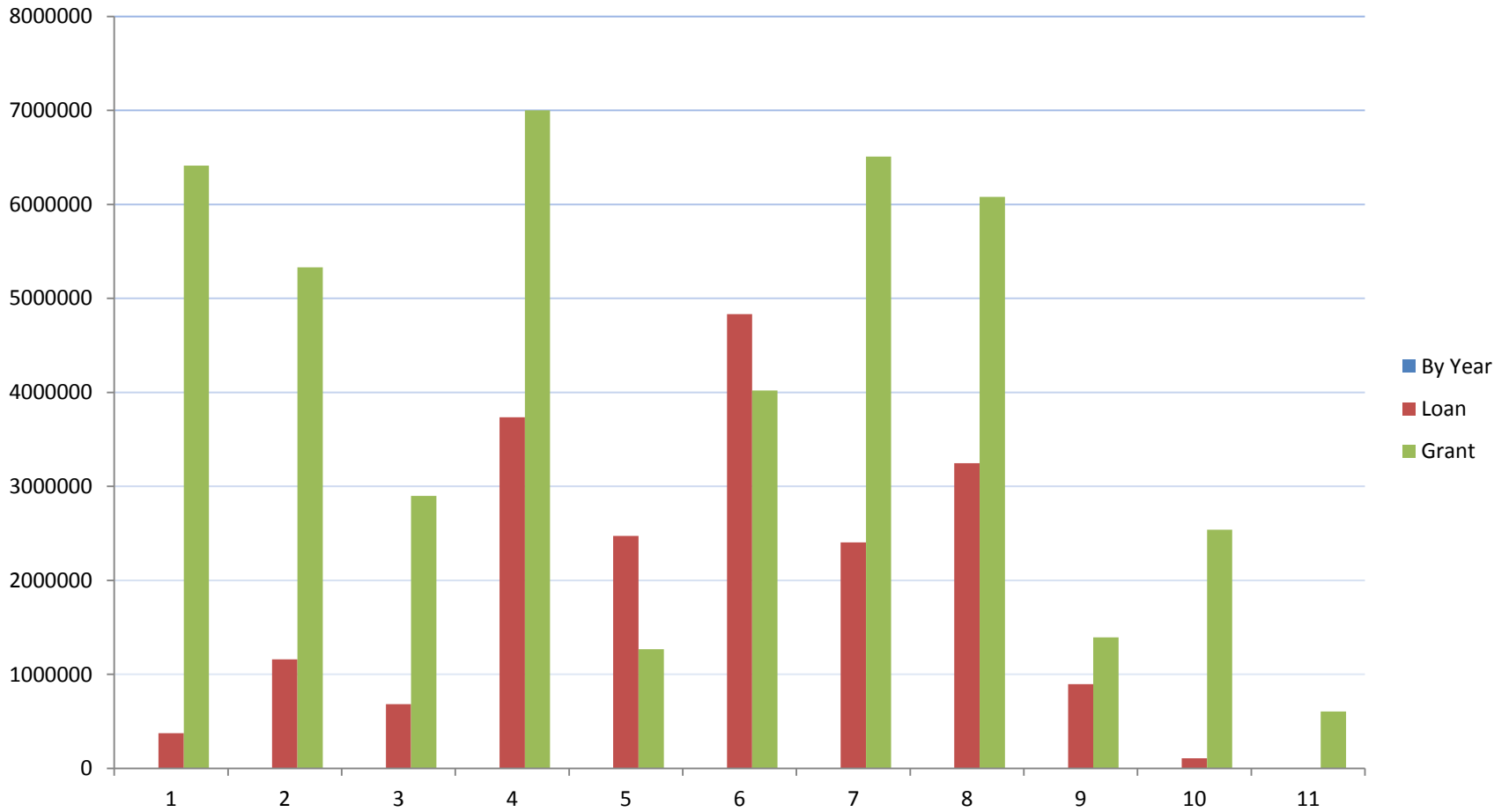
Loans	\$24,579,482
Grants	\$46,273,271
- Includes technical assistance grants provided to non-profits working with Tribes.
- Above amounts do not include rental subsidy or single family housing loans.



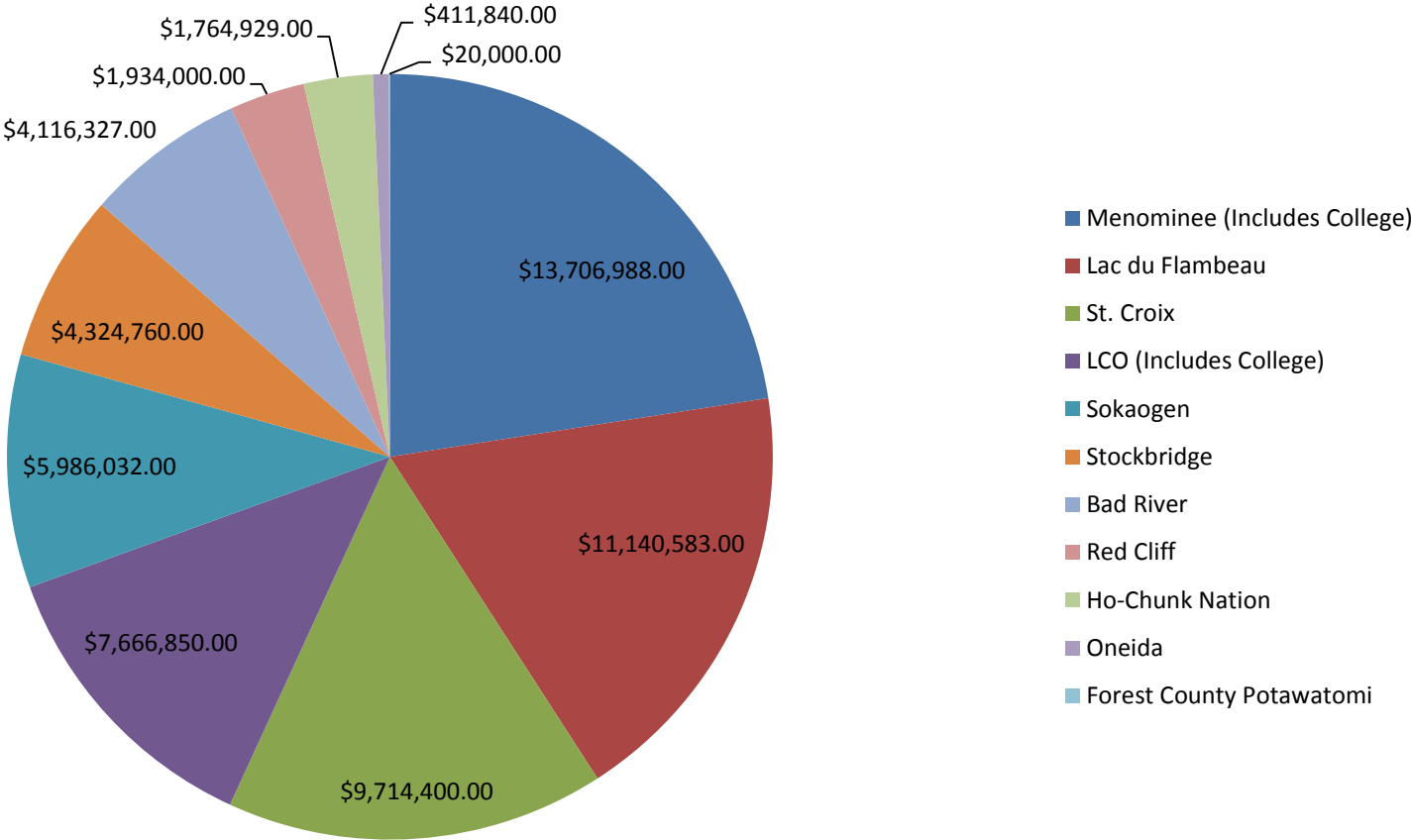
# Annual Investment



# Loan/Grant Investment per year



# Funding by Tribe



Above amounts do not include Non-profits working with Tribes

# Structure Changes

- Cora Schultz – Area Director Spooner – retiring
- Hiring Freeze
- Shared Management Area Offices
- Regionalization of Administrative Duties
- Centralize Guaranteed Housing Delivery
- Foreclosures – Real Estate Owned to CSC



# Community Facility Program

- Loan Funding Available
- Grants – Initiatives only
  - Know your farmer – know your food
    - Community Kitchens, Greenhouses, Roadside Stands
  - Health Care
  - Narrow Banding
  - Regional Projects
  - Child Care
- Utilize Capital Needs Plan

# Water and Waste Programs

- Need loan applications for next year
- 306-C Funding
- Servicing
- Spend existing funds





# Business Programs

- Majority of Programs Oversubscribed
- REAP and RBEG already scored for this year
- RCDI – applications due May 9
- VAPG – NOFA not out yet
- Emphasis on servicing portfolio
- Start early – plan ahead

# Housing

- Farm Labor Housing funds available
- Single Family Guaranteed Loan funds adequate
- Direct loans 40/60 ratio – looking for very low income applicants
- 504 repair program – loan and grant available
- Working on Tribal Trust Foreclosures

# Questions

Donna Huebner

Rural Development Coordinator

4949 Kirschling Court

Stevens Point, WI 54481

[donna.huebner@wi.usda.gov](mailto:donna.huebner@wi.usda.gov)

Tel. No. (715) 345-7600 ext. 173

Mobile (715) 340-3682

# Wisconsin Soil Survey Program

## What are soils?

Soil is a natural body of solids, liquid, and gases, with either horizons, or layers or the ability to support rooted plants.

## Why do we care about soils?

Soils perform vital functions:

- Sustaining plant and animal life below the surface;
- Regulating and partitioning water and solute flow;
- Filtering, buffering, degrading, immobilizing, and detoxifying;
- Storing and cycling nutrients;
- Providing support to structures.

Understanding the building blocks and properties of soil will guide management for vegetation and improve the soil quality overall. Enhanced soil quality can help reduce the onsite and offsite costs of soil erosion, improve water and nutrient use efficiencies, and ensure that the resource is sustained for future use.

## Soil type makes significant differences in tree growth

### Unscreened loam soil

Clumps of soil, or peds, retain original soil structure. Macropores are the spaces between the peds. Unscreened loam soils have ideal plant available water AND drainage.



- **Retain soil/ped structure**
- **Good macropore and micropore space**
- **Excellent plant available water**

### Screened sandy soil mixes

All most all soil structure is lost. High sand content reduces plant available water due to loss of micropores.

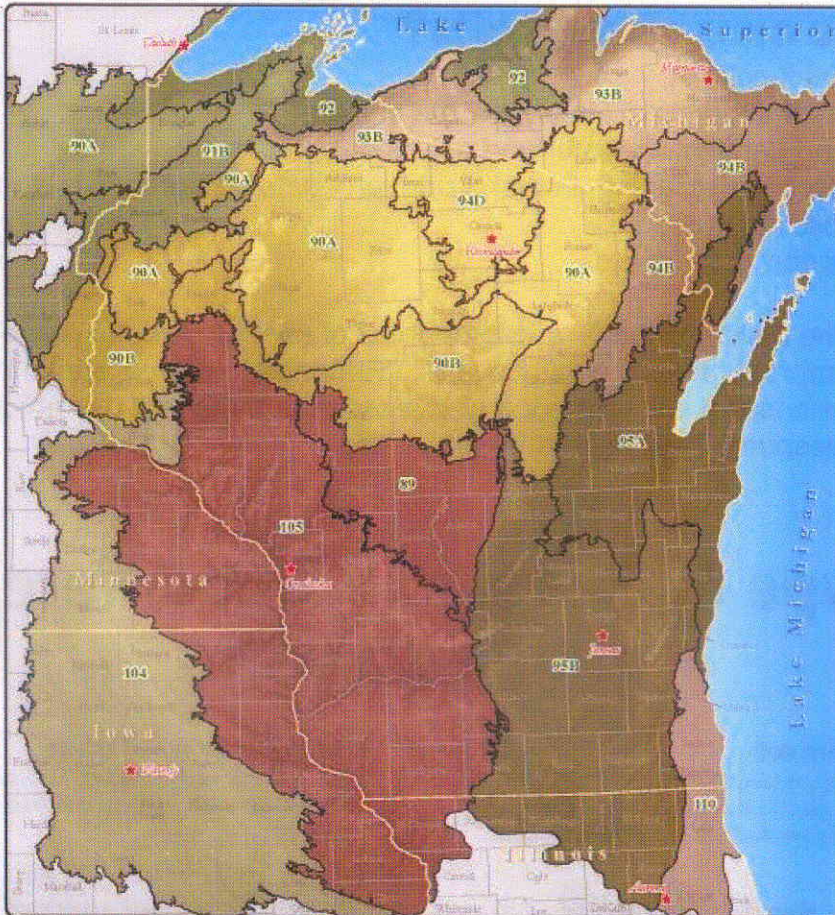


- **No structure**
- **Limited micropore space**
- **Limited plant-available water**

Samantha Lawien  
Soil Scientist  
MLRA Juneau Office  
Samantha.lawien@wi.usda.gov  
920-386-9999 x 114

## What is Soil Survey ?

Soil Survey has a great and everlasting history beginning in the early 1900's. Over the years and different administrations, Soil Survey has morphed and evolved to maintain relevance to suit the customer's needs. Most field workers are housed in Major Land Resource Area (MLRA) offices. The soil scientists are working with raw data to help make the soil survey more accurate, done with the help of newer technologies and procedures. The result of the improvements will provide data that is more useful to the customer and allow them to make better management decisions on the land.



## Contact Information:

Rhineland Office

Scott Eversoll—

715-362-5941 x 125

Onalaska Office

Kevin Traastad—

608-782-0180 x 105

Juneau Office

Chris Miller—

920-386-9999 x 128

## How Soil Surveys Can Help You?

The USDA Natural Resources Conservation Service (NRCS), in cooperation with other federal, state and local agencies, has completed soil surveys for over 95 percent of the counties in the United States. For the past 75 years, hundreds of soil scientists devoted their careers to field mapping and soils studies so that citizens, businesses and units of government could better understand the land. In the past soils maps and information about the soil types were published in the form of county-wide soil survey reports. They were expensive to print, went out of date over time, and were somewhat difficult to use. In order to make soils information easier to access and use as well as keep it updated, the NRCS has digitized the soil maps, soils data, and soils reports and made them available free of charge on the internet. Online soil surveys provide quick and easy access to important information for landowners and land managers. For those who are more advanced or are using software that can process spatial and tabular data, geodata is available through various resources.

## Soil Digital Products:

- These products are available to public and internal users
- Allows user to get specific information easily
- Most importantly, it uses the most CURRENT information available

### Products that are available

- Web Soil Survey  
<http://websoilsurvey.nrcs.usda.gov/app/HomePage.htm>  
This puts soils information all in one place that is as user friendly as a web application for soils can be. A user can create personalized maps and generate personalized reports.
- Geospatial Data Gateway  
<http://datagateway.nrcs.usda.gov/>  
This site allows the user to download imagery from all over the nation. There are quite a few maps such as census data, topographic maps, geology maps, and climate maps.
- Soil Data Mart  
<http://soildatamart.nrcs.usda.gov/>  
This site makes current soils data available for any user. For those who can work with spatial and tabular data with an ESRI software, this product may be less limiting compared to Web Soil Survey. A user can subscribe to an area and when an update is available the user will be sent a notification. This data is the full set of data that is available to USDA Soil Scientists.
- Soil Data Viewer  
<http://soils.usda.gov/sdv/>  
This product is an application that must be downloaded from this site and used as an extension in ArcMap. Through this product a user can create thematic maps and personalized interpretations through joins and relates within the GIS software.
- Smart Phone Web Applications  
Soil Web  
SSurgo Data through ArcMap Application

### Unfamiliar With These Products?

If you are interested in these products and would like some one on one training from your local soil scientist, please call and we will set up an appointment, either come into the office or over the phone! Please be mindful that interpretations may change based on some of the conditions of a soil, this is where the soil scientist can come in and help you choose the right one.






# Air Photo Imagery Jackson County, WI



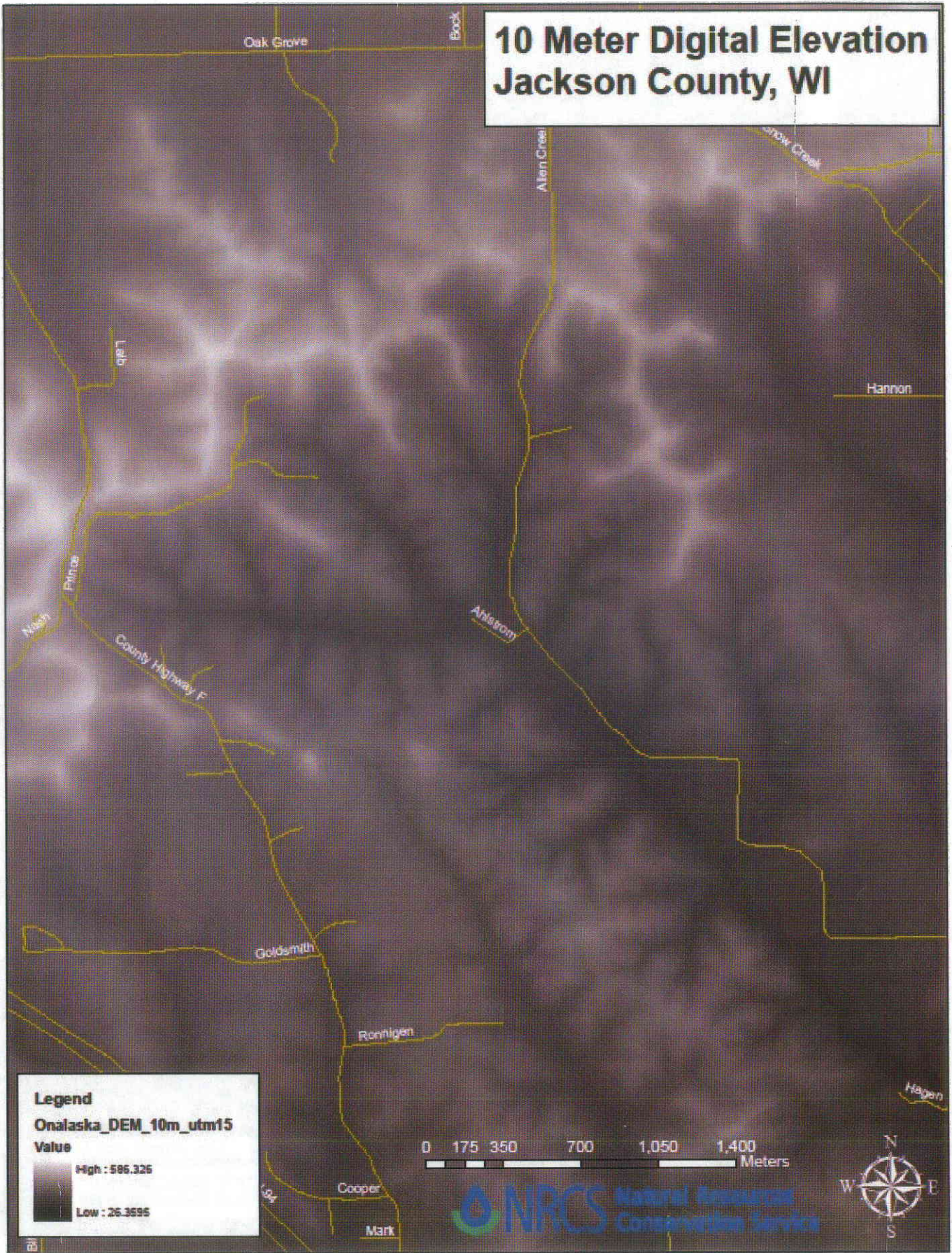
0 115 230 460 690 920 Meters



**NRCS** Natural Resources  
Conservation Service



# 10 Meter Digital Elevation Jackson County, WI



**Legend**  
Onalaska\_DEM\_10m\_utm15  
Value

High : 586.325
Low : 26.3595

0 175 350 700 1,050 1,400 Meters

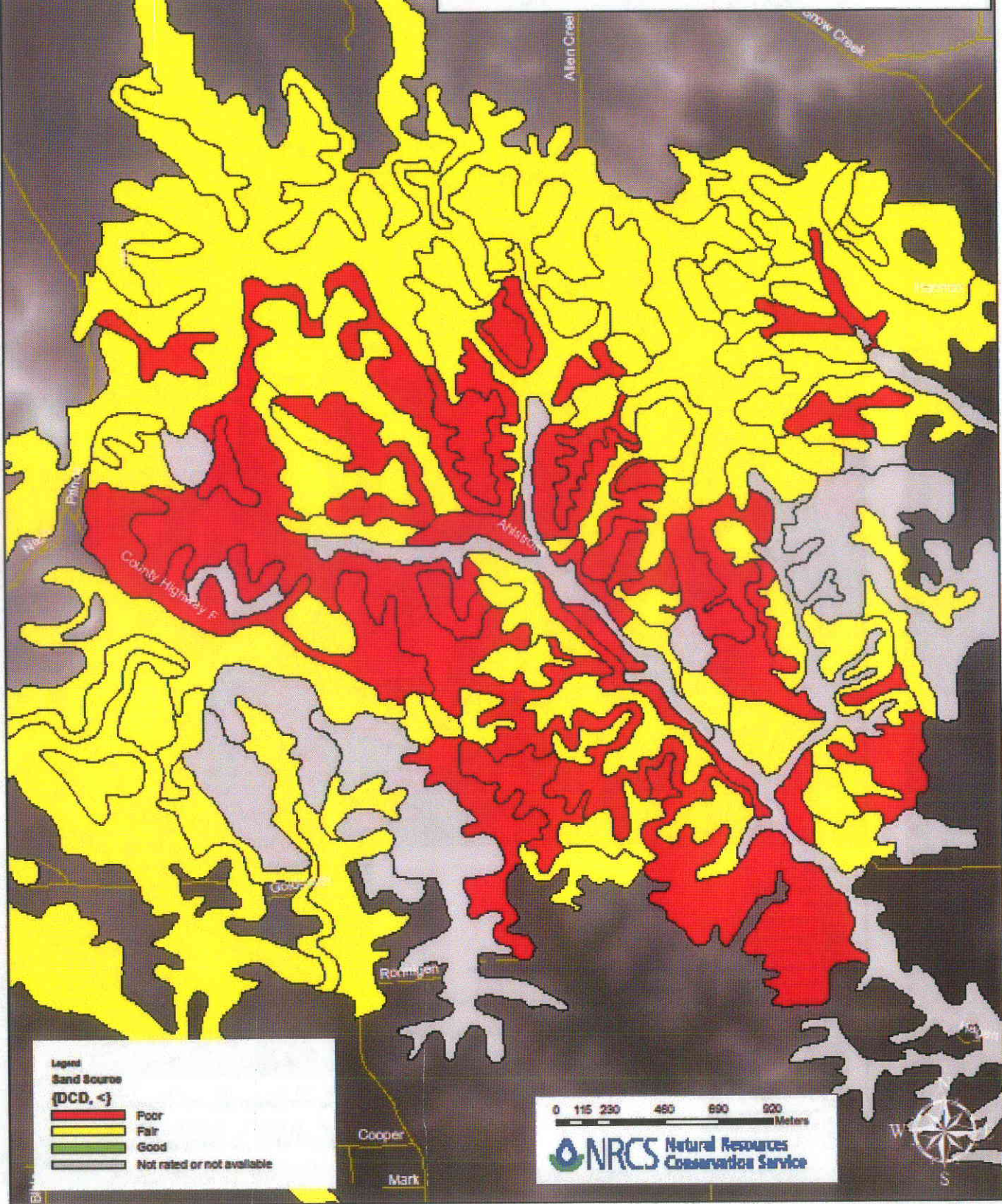
**NRCS** Natural Resources  
Conservation Service



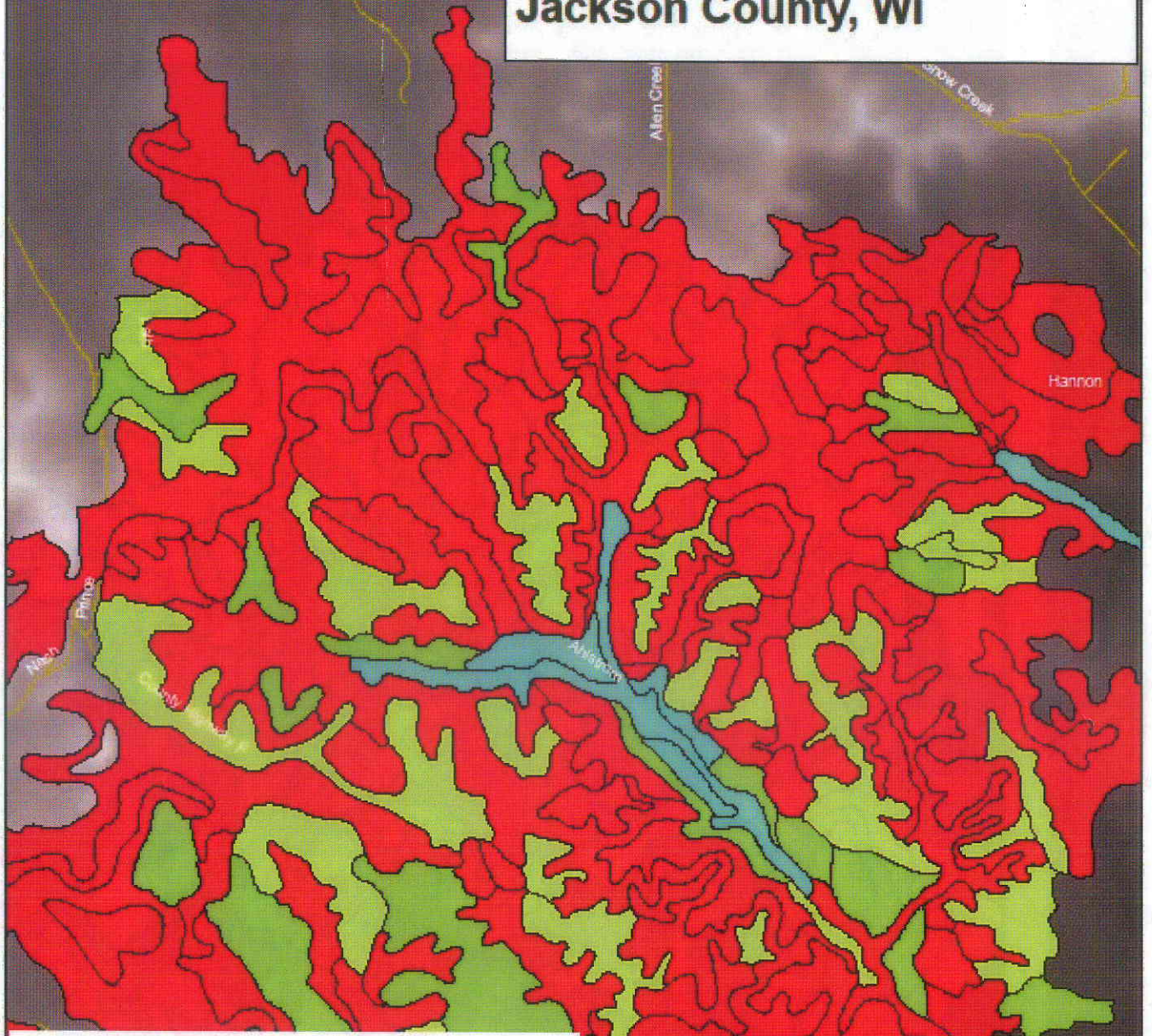




# Sand Source Area Potential Jackson County, WI



# Farmland Classification Map Jackson County, WI



## Legend

- all other values  
(N/A, <)
- Not prime farmland
- All areas are prime farmland
- Prime farmland if drained
- Prime farmland if protected from flooding or not frequently flooded during the growing season
- Prime farmland if irrigated
- Prime farmland if drained and either protected from flooding or not frequently flooded during the growing season
- Prime farmland if irrigated and drained
- Prime farmland if irrigated and either protected from flooding or not frequently flooded during the growing season
- Prime farmland if subsoiled, completely removing the root-inhibiting soil layer
- Prime farmland if irrigated and the product of I (soil erodibility) x C (climate factor) does not exceed 60
- Prime farmland if irrigated and reclaimed of excess salts and sodium
- Farmland of statewide importance
- Farmland of local importance
- Farmland of unique importance
- Not rated or not available

0 115 230 450 690 920  
Meters

**NRCS** Natural Resources  
Conservation Service



## WTCAC – EPA Region V Updates/Info May 2012

- Energy Development on Tribal Lands Course  
Instructed by the U.S. Department of the Interior and other Indian country experts  
Minneapolis, Minnesota, on July 30-31, 2012.  
Reduced registration rate is available [through July 20, 2012](#).  
<http://teeic.anl.gov/news/>
- \$20 Million Available for Clean Diesel Projects  
The closing date for receipt of proposals is [June 4, 2012](#).  
<http://www.epa.gov/otaq/diesel/prgnational.htm>
- Tribal Climate Change Webinars: Institute for Tribal Environmental Professionals (see ePacket)  
“The National Climate Assessment: An Update on the Tribal Chapter”  
Tuesday, May 15, 2012 1:00 PM - 3:00 PM CDT  
Thursday, May 17, 2012 1:00 PM - 3:00 PM CDT
- Upcoming Events on the National Tribal Calendar (see ePacket for complete calendar)  
*May 8-10 National Tribal Healthy Homes & Energy Efficiency Conference, Sault Sainte Marie, Michigan*  
*May 14-17 ATNI Mid-Yr. Conference, Pendleton, OR*  
*May 15-17 3rd Annual Tribal Utilities Summit, Niagara Falls, NY*  
*May 22-24 National Tribal Forum on Air Quality, Tulsa, OK*  
*May 29-June 4 2012 Exchange Network National Meeting, Philadelphia, PA*  
*June 3-8 SAIGE Ninth Annual National Training Program, Denver, CO*
- Status of Tribal Environmental Agreement Renewal Process  
WI TEA templates are now available and will be emailed to Tribal Environmental Directors soon.
- Need updated contact info for WI Tribes  
EPA Database needs to be kept up to date to avoid delays in notifications.  
Existing contacts sheet for update included in ePacket and passed at WTCAC.
- EPA Climate Change Adaptation Plan Consultation [Closes 05/15/12](#)  
Gerald Filbin - 202-566-2182 - [Filbin.Gerald@epamail.epa.gov](mailto:Filbin.Gerald@epamail.epa.gov)
- Draft National Water Program Strategy: Response to Climate Change (2012)  
<http://water.epa.gov/scitech/climatechange/2012-National-Water-Program-Strategy.cfm>  
See above link or additional info in ePacket for instructions on how to comment.
- Webinar Clearing up Climate Confusion - Wednesday, [May 16, 2012, 1:00-2:00 p.m. EDT](#)  
Union of Concerned Scientists – Facts and Talking Points for Communicating with Public  
Sign Up Online: [http://www.ucsusa.org/global\\_warming/what\\_you\\_can\\_do/desk-reference.html](http://www.ucsusa.org/global_warming/what_you_can_do/desk-reference.html)
- Public Participation Guide & Toolkit

(Designed to help governments and organizations develop effective ways to engage the public in environmental issues)

Available Online @: <http://www.epa.gov/international/public-participation-guide/index.html>

More Info: Shereen Kandil (EPA DC) [kandil.shereen@epa.gov](mailto:kandil.shereen@epa.gov)

- TRIBAL GREEN CASINOS AND ENVIRONMENTAL TOBACCO SMOKE WORKSHOP  
Week of September 17, 2012 - Grand Portage MN  
More info: Fayette Bright, [bright.fayette@epa.gov](mailto:bright.fayette@epa.gov) , 312-886-6069
  
- Free Energy and Mold Onsite Technical Assistance Visits – HUD  
*“Site visits are FREE and consist of three days of housing energy assessments and technical assistance. The site visit results in a report serving as a plan of action for the tribe to address current and future mold and mildew problems and indoor air quality issues. In addition, the report will recommend strategies for the tribe to improve energy efficiency”*  
Contracted by HUD through FirstPic, Inc  
Site visit form included in ePacket.  
Contact: Sara Fiala 202.393.6400 (p) [sfiala@firstpic.org](mailto:sfiala@firstpic.org)
  
- New trainings posted: <http://water.epa.gov/learn/training/tribaltraining/curriculum12.cfm>
  - Infrastructure Operation and Maintenance (O&M), and Management Training for Tribal Water and Wastewater Operators and Leaders (Several May dates remaining)

# WTCAC MEETING

MAY 2, 2012

# Rural Development Investment 10 years prior to WTCAC 1991-2001

- Total Investment      \$11,895,724
  - Loans                      \$3,026,980
  - Grants                     \$8,868,744

# Rural Development Tribal Funding Since 2001

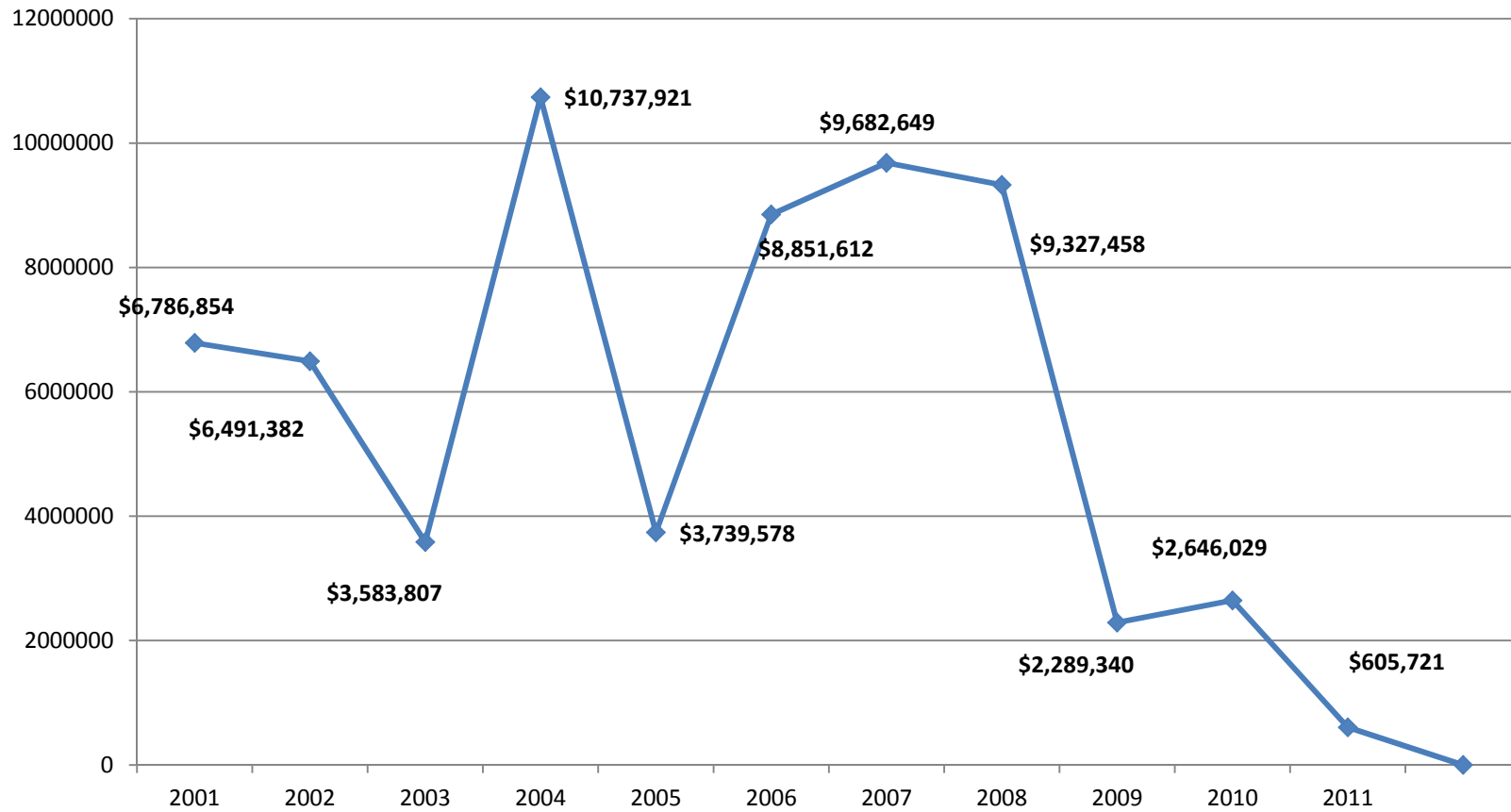
- Total Investment - **\$66,958,426**

Loans	\$24,579,482
Grants	\$46,273,271
- Includes technical assistance grants provided to non-profits working with Tribes.
- Above amounts do not include rental subsidy or single family housing loans.

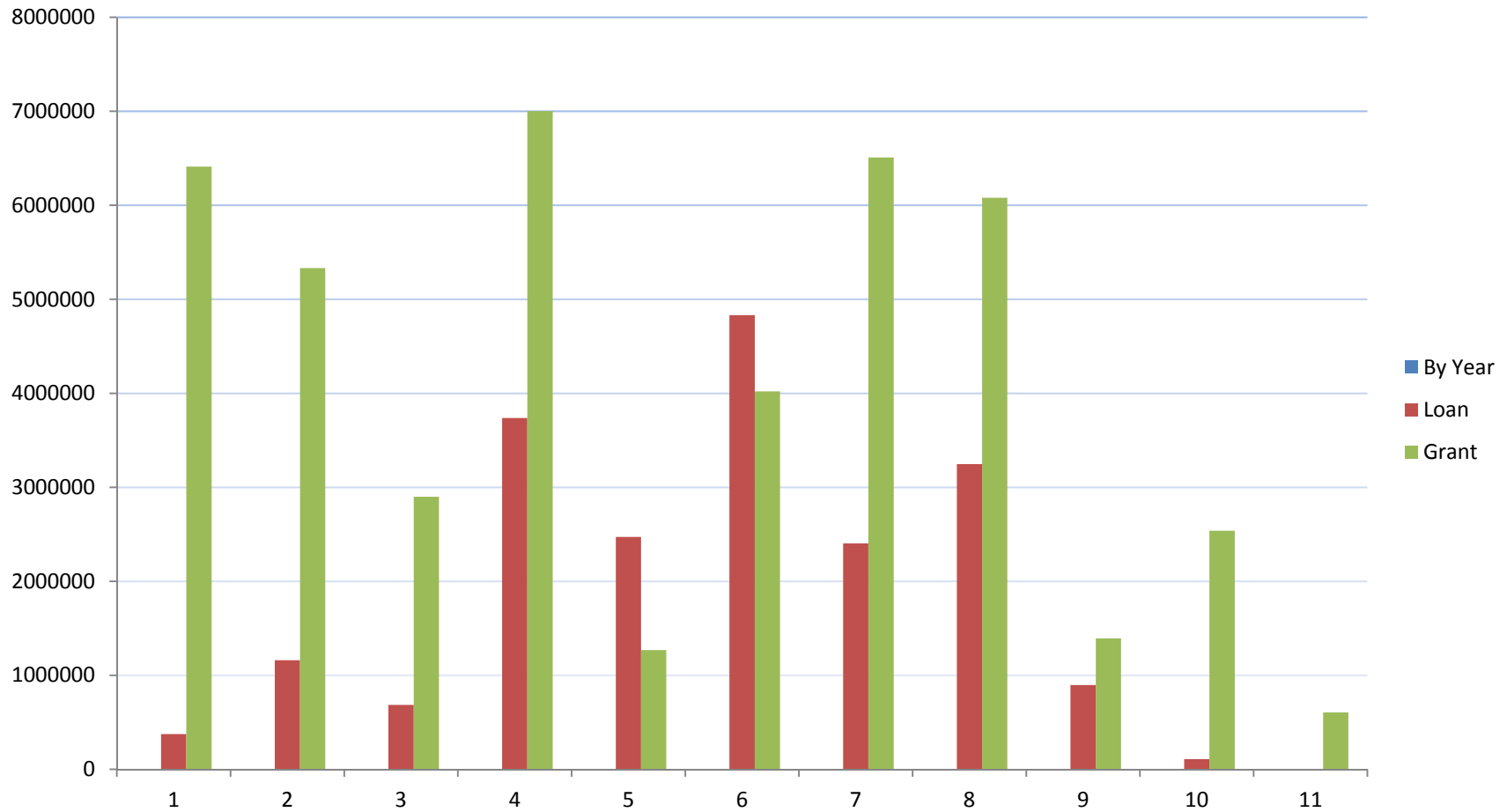




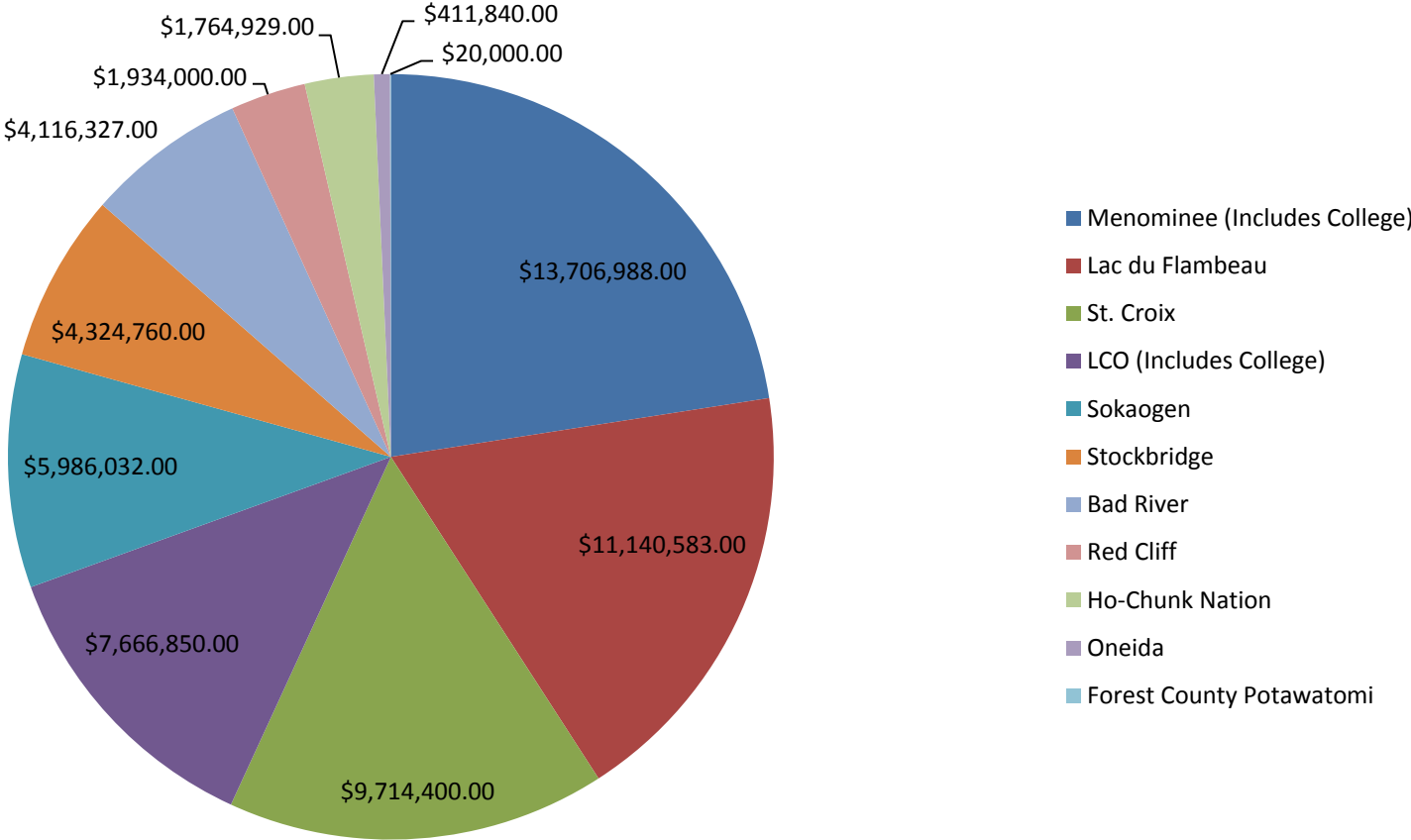
# Annual Investment



# Loan/Grant Investment per year



# Funding by Tribe



Above amounts do not include Non-profits working with Tribes

# Structure Changes

- Cora Schultz – Area Director Spooner – retiring
- Hiring Freeze
- Shared Management Area Offices
- Regionalization of Administrative Duties
- Centralize Guaranteed Housing Delivery
- Foreclosures – Real Estate Owned to CSC



# Community Facility Program

- Loan Funding Available
- Grants – Initiatives only
  - Know your farmer – know your food
    - Community Kitchens, Greenhouses, Roadside Stands
  - Health Care
  - Narrow Banding
  - Regional Projects
  - Child Care
- Utilize Capital Needs Plan

# Water and Waste Programs

- Need loan applications for next year
- 306-C Funding
- Servicing
- Spend existing funds



# Business Programs

- Majority of Programs Oversubscribed
- REAP and RBEG already scored for this year
- RCDI – applications due May 9
- VAPG – NOFA not out yet
- Emphasis on servicing portfolio
- Start early – plan ahead

# Housing

- Farm Labor Housing funds available
- Single Family Guaranteed Loan funds adequate
- Direct loans 40/60 ratio – looking for very low income applicants
- 504 repair program – loan and grant available
- Working on Tribal Trust Foreclosures



# Questions

Donna Huebner

Rural Development Coordinator

4949 Kirschling Court

Stevens Point, WI 54481

[donna.huebner@wi.usda.gov](mailto:donna.huebner@wi.usda.gov)

Tel. No. (715) 345-7600 ext. 173

Mobile (715) 340-3682